



# ***Kajaria*** **VITRONITE**

SLABS | FULL BODY | OUTDOOR | DOUBLE CHARGE

CATALOGUE -2025



# ***Kajaria***



Aerial view of virat nagar plant, (Rajasthan)



Only tile company in India to be conferred with “superbrand” for the thirteen times in a row.

## WE PURSUED EXCELLENCE, LEADERSHIP FOLLOWED



Awarded Asia's Most promising brand.

Kajaria Ceramics is the Largest Manufacturer of Ceramic & Vitrified Tiles in India and 8<sup>th</sup> Largest in the World.

The motivating factor remains the zeal to be the best, to be at the top and to achieve the highest echelons of excellence.



Certified member of Indian Green Building Council

The manufacturing units are equipped with cutting edge technology. Intense automation, robotic car application and a zero chance for human errors are just few reasons why Kajaria remains at the top in the industry.

The best in providing tile solutions, Kajaria has since then grown stronger with its hard work, innovation and patronage from our discerning customers.

## AWARDS & ACCOLADES

- ISO 9001:2015 :Certification for Implementing Quality Management System Standards.
- ISO 14001:2015 : Certification for Implementing Environmental Management System Standards.
- ISO 22000:2018 : Certification for Implementing Food Safety Management System Standards.
- ISO 50001:2018 : Certification for Implementing Energy Management System Standards.
- ISO SA 8000:2014 : Certification for Implementing Social Accountability Management System Standards.
- ISO 45001:2018 : Certification for Implementing Occupational Health and Safety Management System Standards.

DOUBLE CHARGED  
VITRIFIED TILES



<b>SOLITAIRE PLUS</b> 80X160 CM	06-11
<b>SOLITAIRE PLUS</b> 100X100 CM	18-25
<b>SOLITAIRE</b> 80X80 CM	26-31
<b>TROPICANA</b> 80X80 CM	32-35
<b>SAPPHIRE</b> 60X120 CM	36-49
<b>AMAZON</b> 60X60 CM	122-125
<b>DOUBLE CHARGE</b> 60X60 CM	126-133
<b>CLASSIC</b> 60X60 CM	134-135

INDEX

SOLUBLE SALT  
VITRIFIED TILES



<b>ELEGANT SOLUBLE SALT</b> 60X60 CM	136-139
---	---------



# FULL BODY VITRIFIED TILES



STONEGRES PLUS 80X160 CM	12-17
STONE ART 60x120 CM	50-87
TERRAZZO 60x120 CM	88-93
SALT & PEPPER	
STONEGRES PLUS 60X120 CM	102-109
STONEGRES NEO 60X120 CM	110-113
STONEGRES NEO 60X60 CM	114-117
STONEGRES 60X60 CM	118-121
STEP & RISER	
STEPSTONE 30x152 CM (STEP) 20x152 CM (RISER)	96-97
STEPSTONE 30x120 CM (STEP) 20x120 CM (RISER)	98-101

# HEAVY DUTY OUTDOOR VITRIFIED TILES



DURATECH-XT 60X60 CM	140-149
DURATECH 40X40 CM	150-171
DURATECH WALL CLADDING 30x45 CM	172-177

# SOLITAIRE PLUS

Size

**800x1600** mm



## IDEAL FOR URBAN CHOICE

Kajaria introduces Solitaire Plus 800x1600mm double charge tiles in high gloss super sheen nano surface. Emanating a breathtaking visual impact of a space, Solitaire Plus slabs are aesthetically pleasing and its grandeur and bold look demonstrate its utility and splendidity. The Solitaire Plus double charge tiles provide stain resistance and easy maintenance.

Double Charge  
Polished Vitrified Tiles





## SOLITAIRE PLUS

800x1600 mm

SUPER GLOSSY

Double Charge Polished Vitrified Tiles





K-16801



K-16802



K-16804

## SOLITAIRE PLUS

800x1600 mm

SUPER GLOSSY

Double Charge Polished Vitrified Tiles

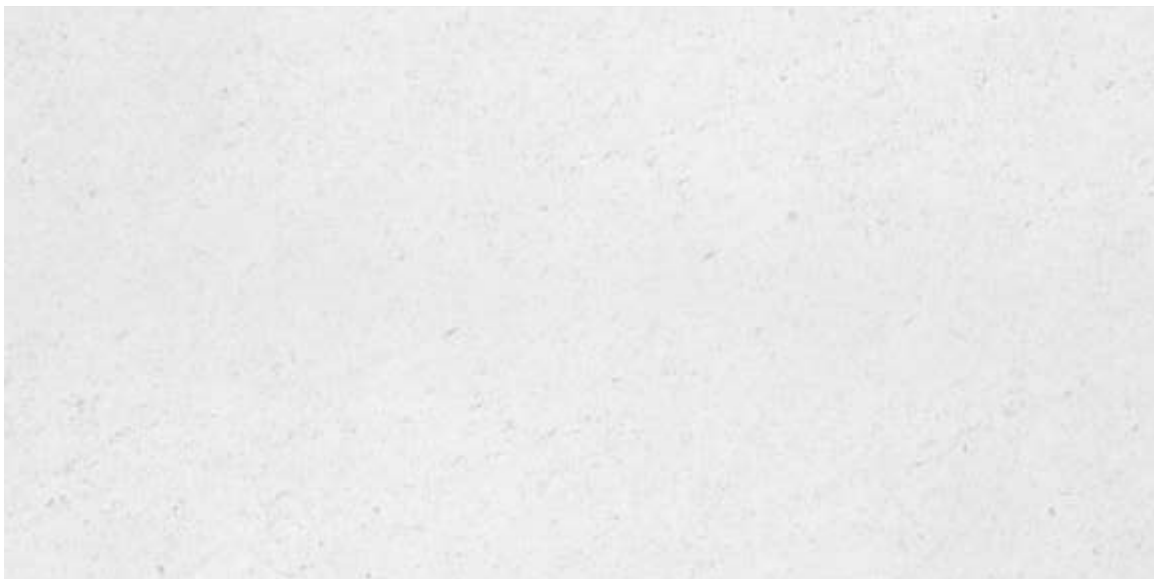


K-16810

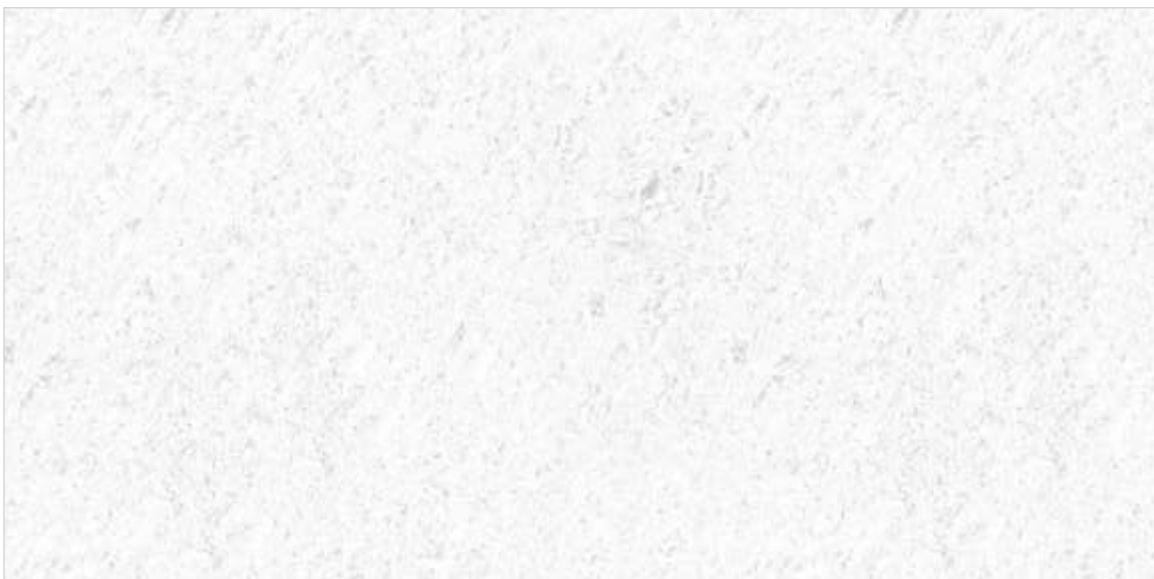




K-16805



K-16806

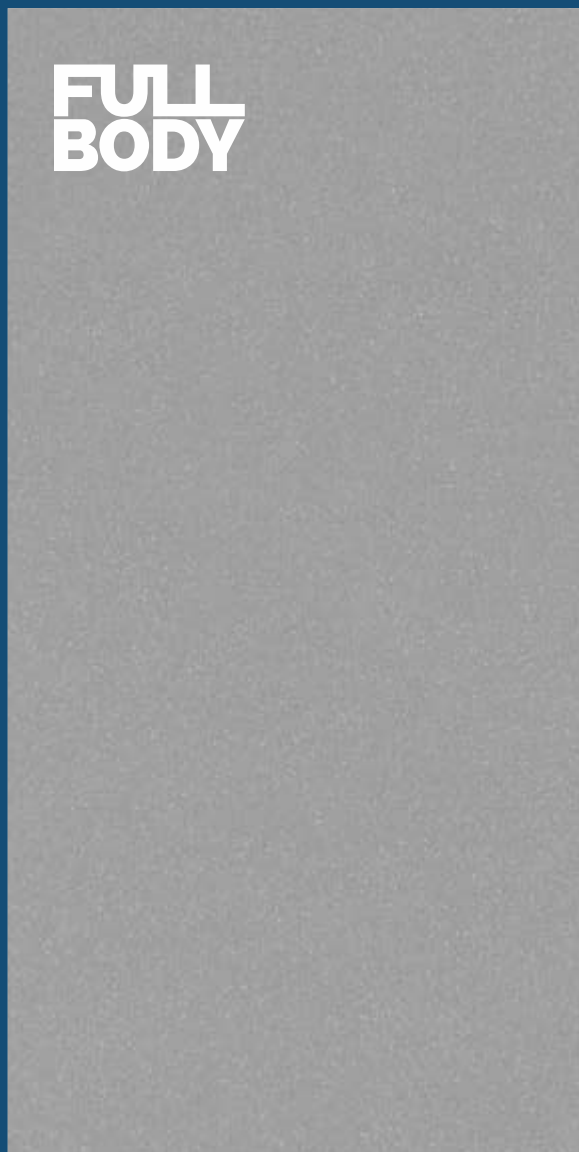


K-16810

# STONE GRES PLUS

Size

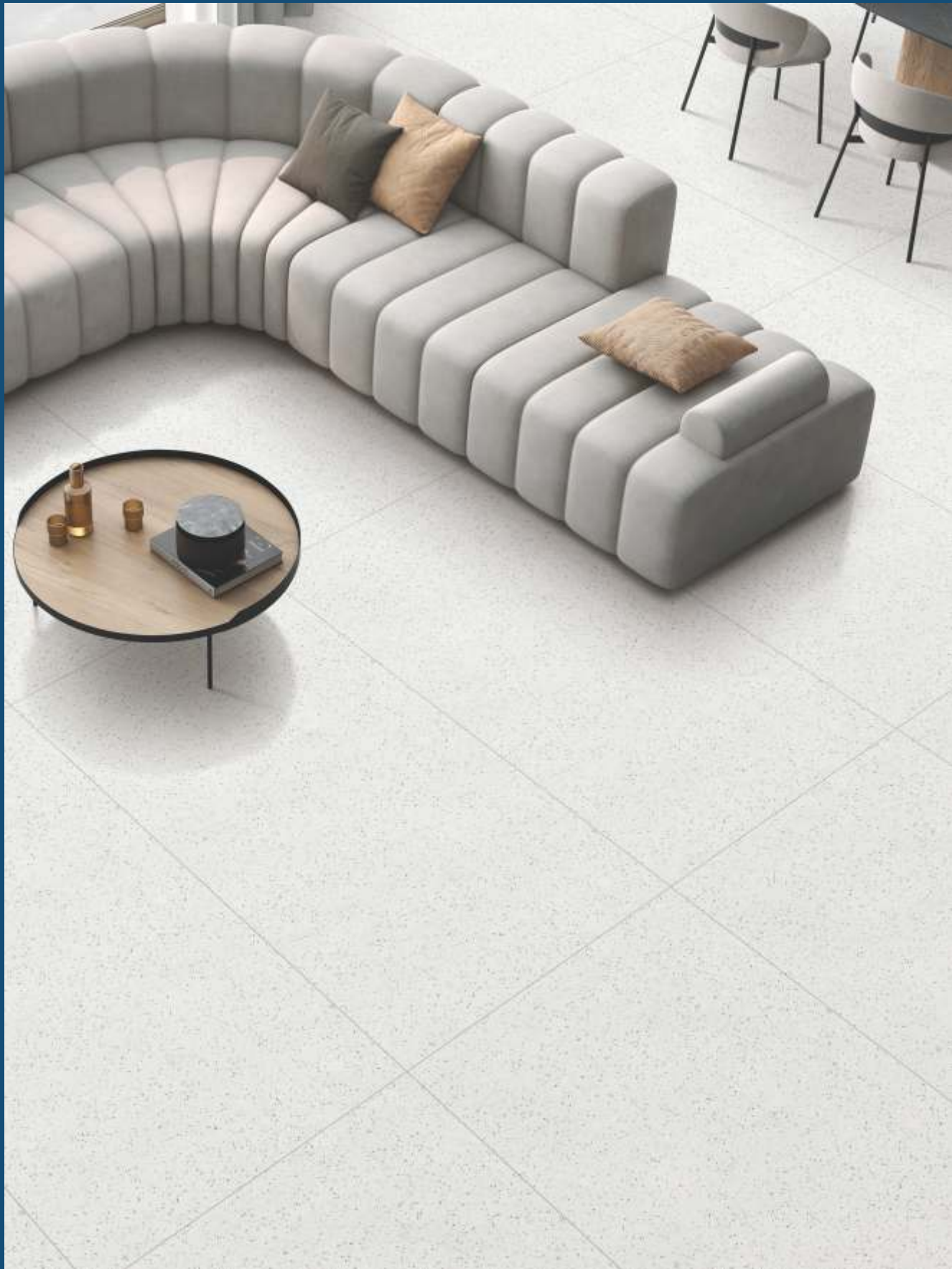
**800x1600** mm



## MODERN LIVING, INSPIRED CHOICES

Kajaria introduces StoneGres Plus - FULL BODY Tiles in size of 800x1600mm which is a revolution in the Polished Vitrified Tiles product category. Serving as an ideal solution to numerous applications, Adding to its reliability, these slabs have very low water absorption. which ensures the surface remains 100% moisture free, evading the growth of bacteria and fungus. The StoneGres Plus full body tiles provide stain resistance and easy maintenance.

Full Body Vitrified Tiles  
Matt | Polished





## STONE GRES PLUS

800x1600 mm

POLISHED / MATT

Full Body Vitrified Tiles

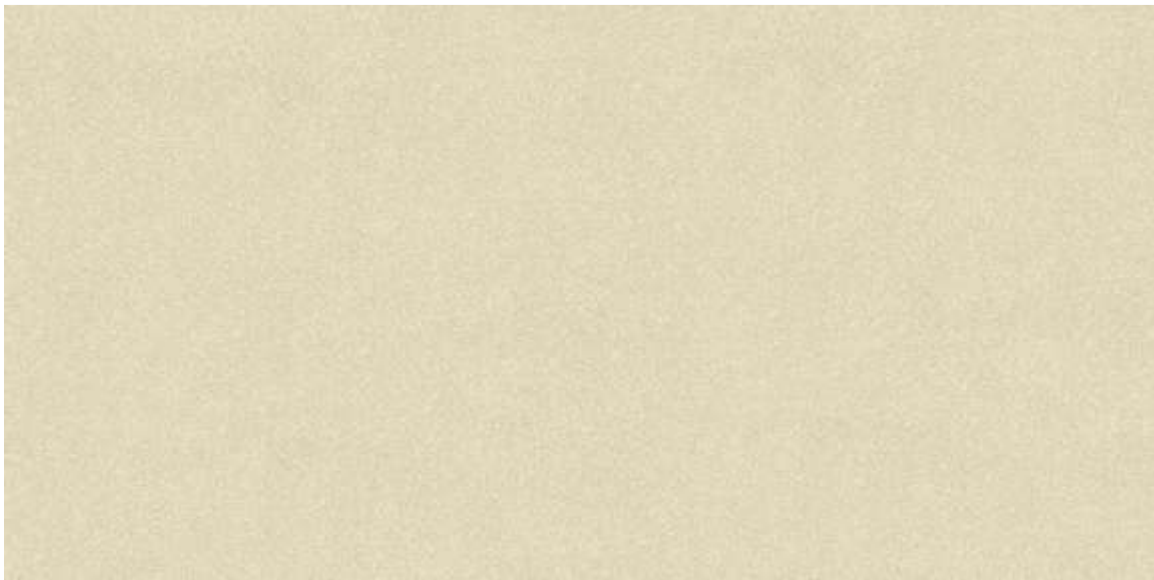


K-16852



K-16851

MATT | POLISHED



K-16852

MATT | POLISHED

## STONE GRES PLUS

800x1600 mm

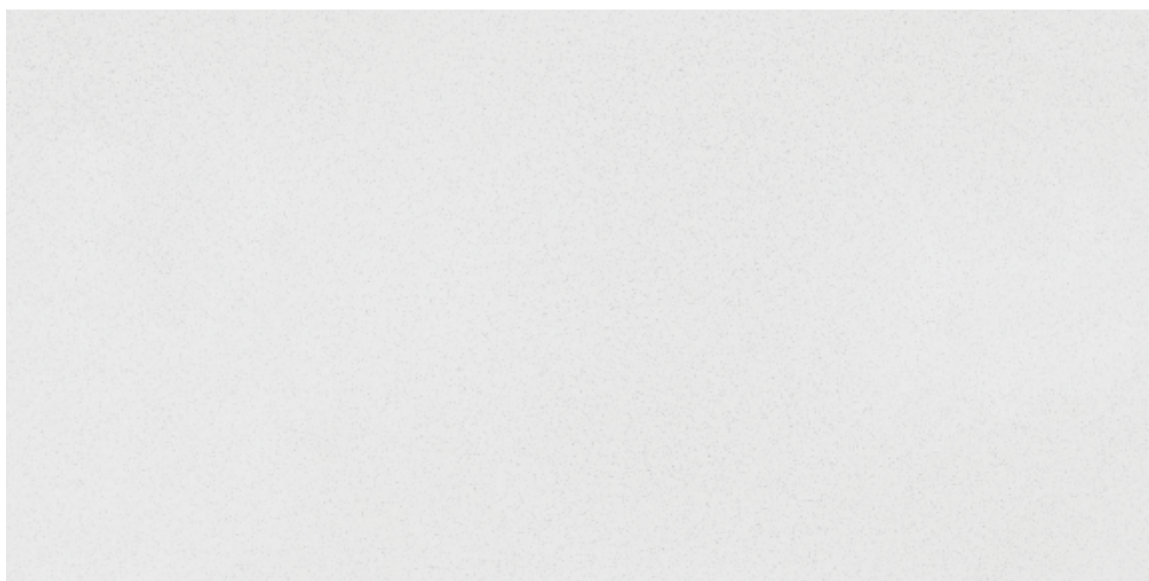
POLISHED / MATT

Full Body Vitrified Tiles



K-16853

MATT | POLISHED



K-16857

POLISHED



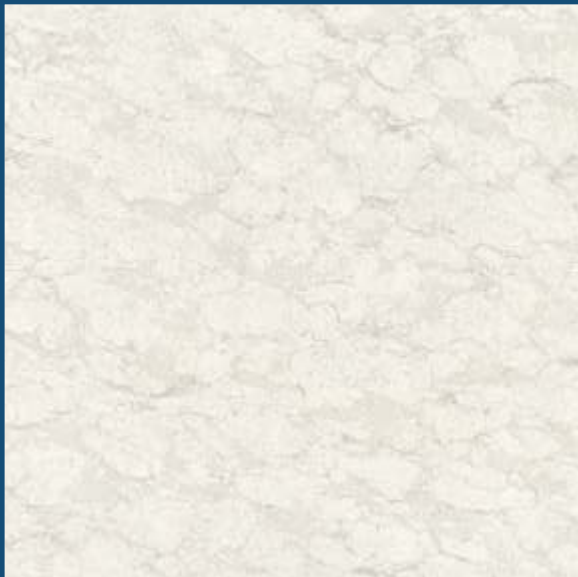


K-16853 & K-16857

# SOLITAIRE PLUS

Size

1000x1000 mm



## ONE SURFACE MANY POSSIBILITIES

Introducing Solitaire Plus 1000x1000 mm vitrified tiles. Kajaria's exclusive technologies, high standards and reliability are matched with style, taste and design of these tiles. Indulge into a grandiosity of space which reflects refined delicacies. The tiles symbolize the epitome of a luxe yet contemporary collection.

Double Charge  
Polished Vitrified Tiles





## SOLITAIRE PLUS

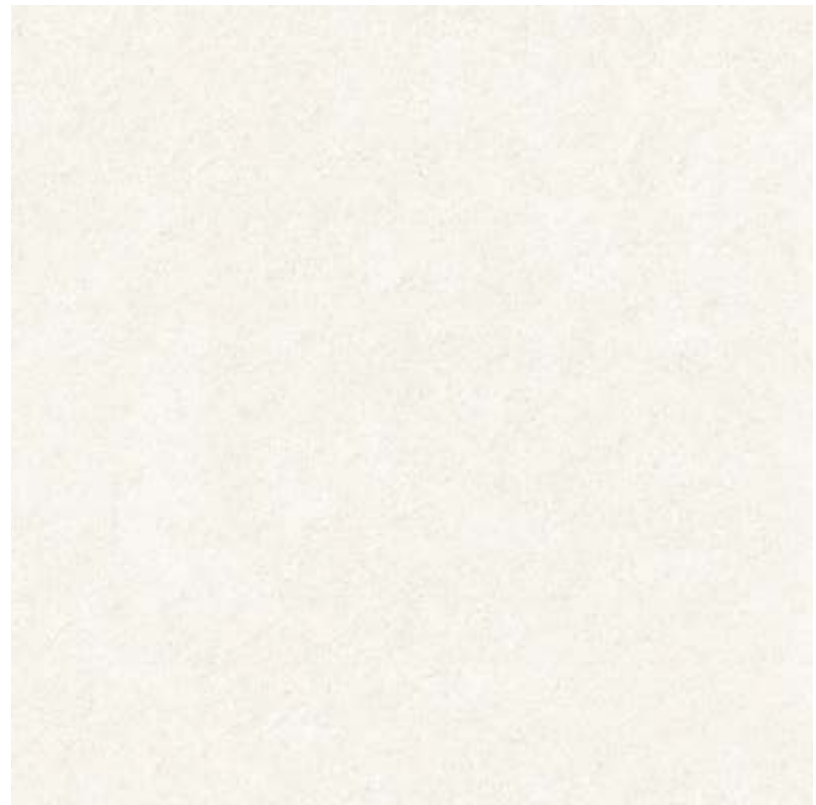
1000x1000 mm

SUPER GLOSSY

Double Charge Polished Vitrified Tiles



K 10104



K 10102



K 10104



## SOLITAIRE PLUS

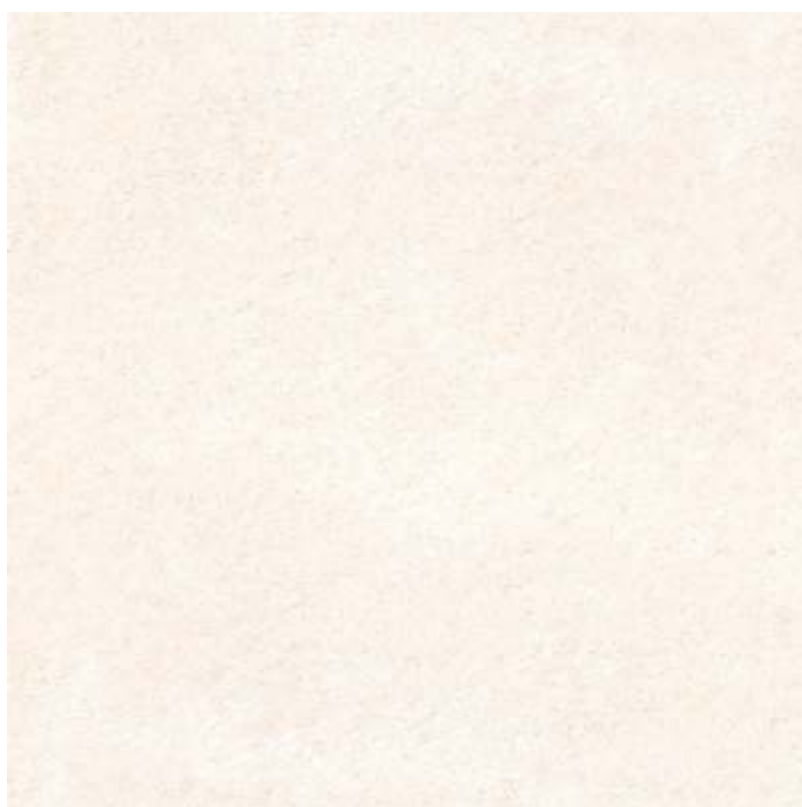
1000x1000 mm

SUPER GLOSSY

Double Charge Polished Vitrified Tiles



K 10105



K 10106







K 10105

## SOLITAIRE PLUS

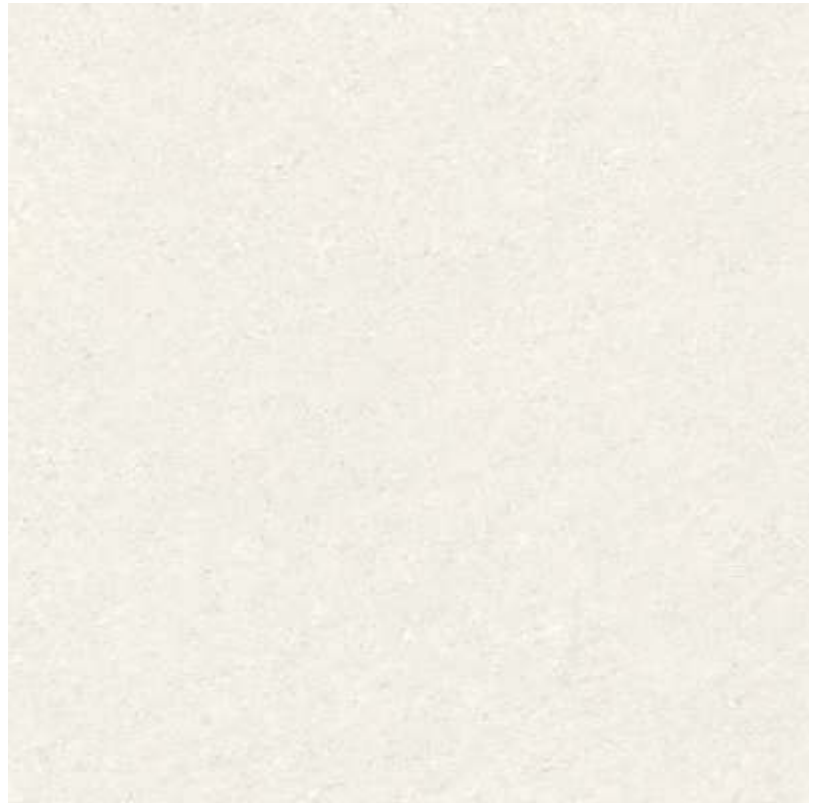
1000x1000 mm

SUPER GLOSSY

Double Charge Polished Vitrified Tiles



K 10107



K 10107



K 10108



# SOLITAIRE

Size

**800x800** mm



## THE GEM OF EVERY ADOBE

The essential synthesis of aesthetics and quality of materials, Solitaire is the shining gem in polished vitrified tiles, with a profound aesthetic design, and the emblem of Kajaria. These 800x800 mm floor tiles are remarkable in appeal and embraces all colors. Kajaria's exclusive technologies, high standards and reliability are matched with style, taste and design of these tiles. Indulge into a grandiosity of space which reflects refined delicacies. The tiles symbolize the epitome of a luxe yet contemporary collection.

Double Charge  
Polished Vitrified Tiles



**SOLITAIRE**

**800x800 mm**

SUPER GLOSSY

Double Charge Polished Vitrified Tiles



K 8402





K 8401



K 8402



K 8405



K 8409



K 8501



K 8502

**SOLITAIRE**

**800x800 mm**

SUPER GLOSSY

Double Charge Polished Vitrified Tiles



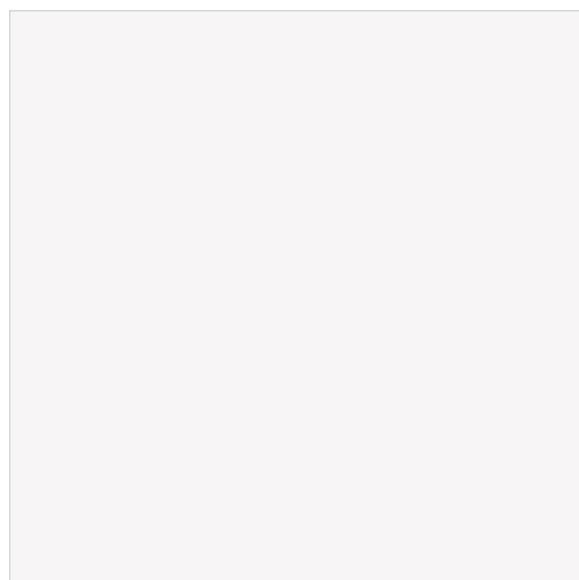
K 8503



K 8504



K 8506



K 8800

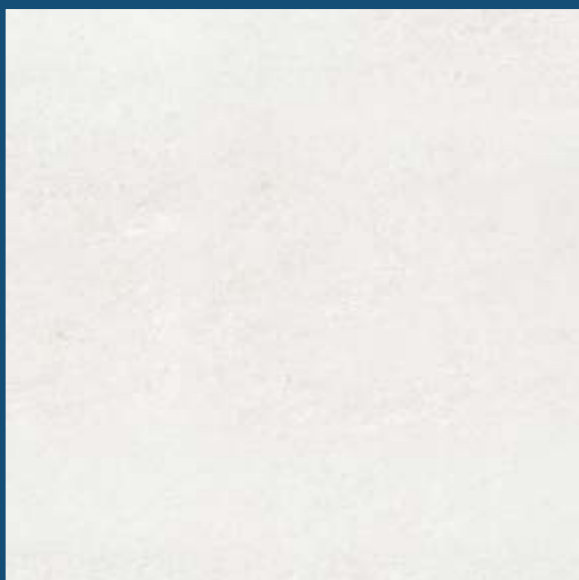
SPECIAL PLAIN COLOUR



# TROPICANA

Size

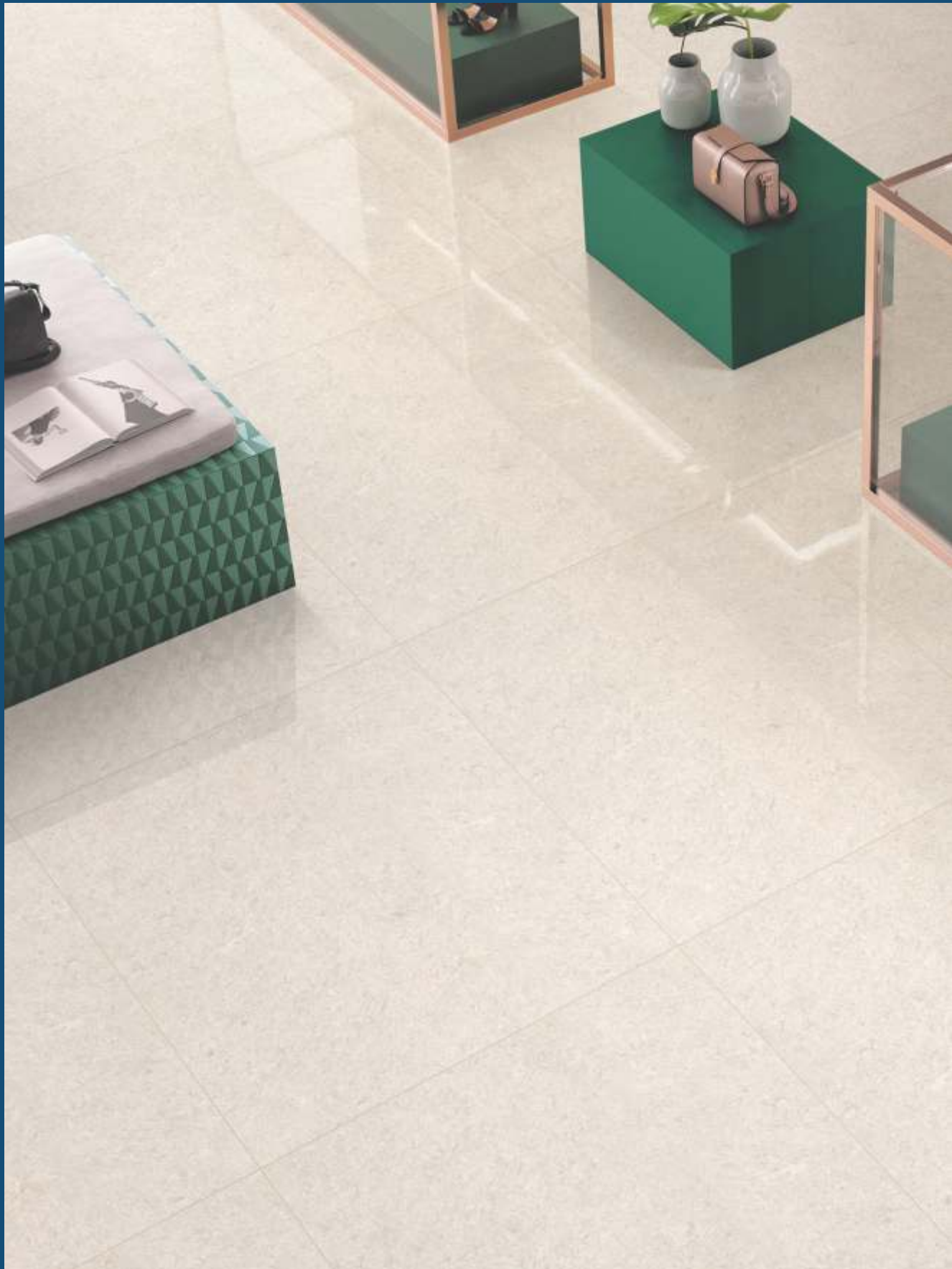
**800x800 mm**



## ALLURING BEAUTY, TIMELESS ELEGANCE

With the interplay of astounding grandeur and blissful perception of space, this series will surely charm your heart and refine your space. The 800x800 mm tiles enable you to expand your boundaries of imagination and design with a glorious display of various designs to adorn your floors. Skillfully crafted by using state-of-the-art technologies, these tiles are durable in both form and function. Experience the constant balance between modernity and harmony aligning with the most innovative standards.

Double Charge  
Polished Vitrified Tiles



## TROPICANA

800x800 mm

SUPER GLOSSY

Double Charge Polished Vitrified Tiles



K 8307





K 8301



K 8306



K 8307

# SAPPHIRE

Size

**600x1200** mm



## BEAUTY IN PERFECT SIZE

Introducing double charge polished vitrified tiles in the size of 600x1200 mm for the first time in India. Sapphire is created from the evolution of metropolitan style, that makes up the urban lifestyle. Created with the finest elements and conceived with a unique vision, Sapphire combines sensational designs with practical dimensions in one compelling form. A stunning product, cladding all kinds of interiors, conferring harmony and charm in the most mesmerizing way.

Double Charge  
Polished Vitrified Tiles





## SAPPHIRE

600x1200 mm

SUPER GLOSSY

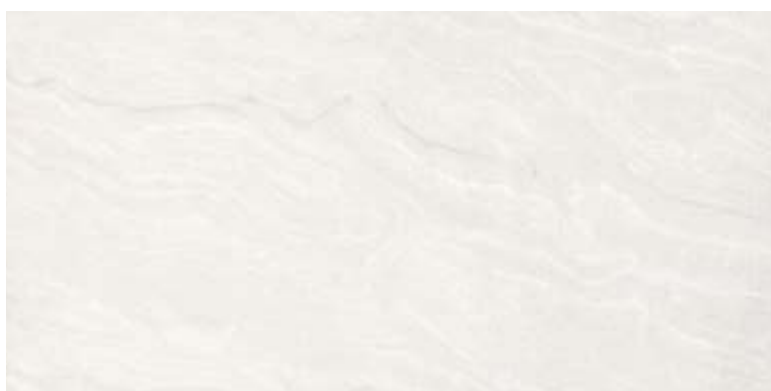
Double Charge Polished Vitrified Tiles



K 12601



K 12602



K 12604



K 12605





K 12602

**SAPPHIRE**  
**600x1200 mm**

SUPER GLOSSY

Double Charge Polished Vitrified Tiles







K 12606



K 12608



K 12609



K 12611

## SAPPHIRE

600x1200 mm

SUPER GLOSSY

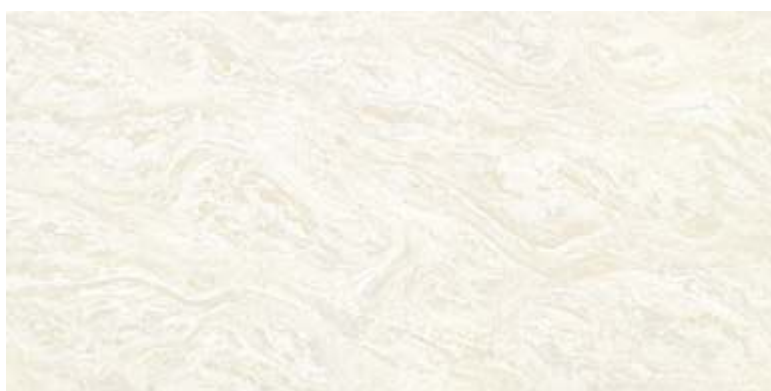
Double Charge Polished Vitrified Tiles



K 12612



K 12614



K 12615



K 12618





K 12618



**SAPPHIRE**  
**600x1200 mm**

SUPER GLOSSY

Double Charge Polished Vitrified Tiles



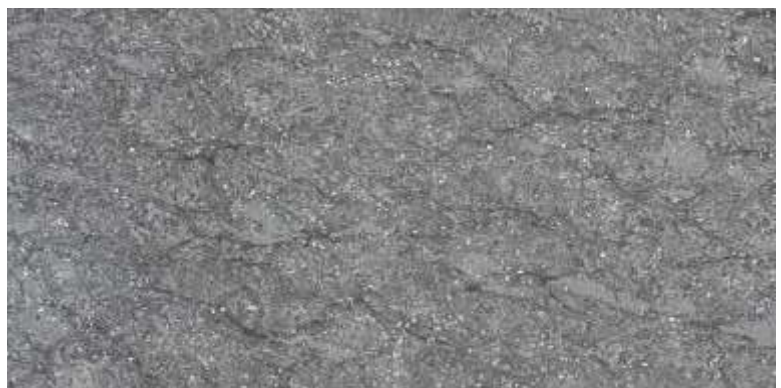




K 12623



K 12626



K 12627



K 12628



**SAPPHIRE**  
**600x1200 mm**

SUPER GLOSSY

Double Charge Polished Vitrified Tiles



K-12642





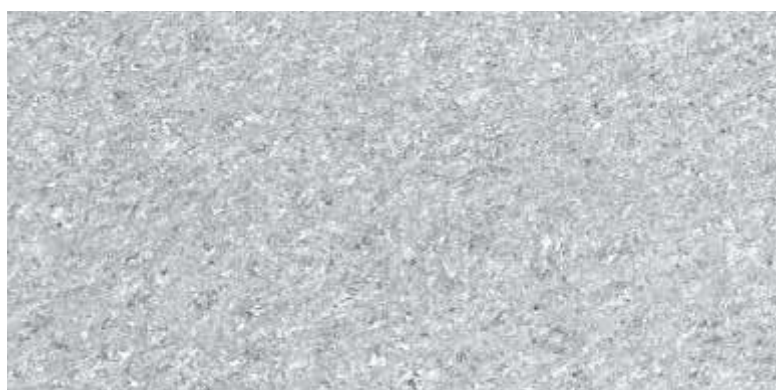
K 12629



K 12636



K 12635



K 12642

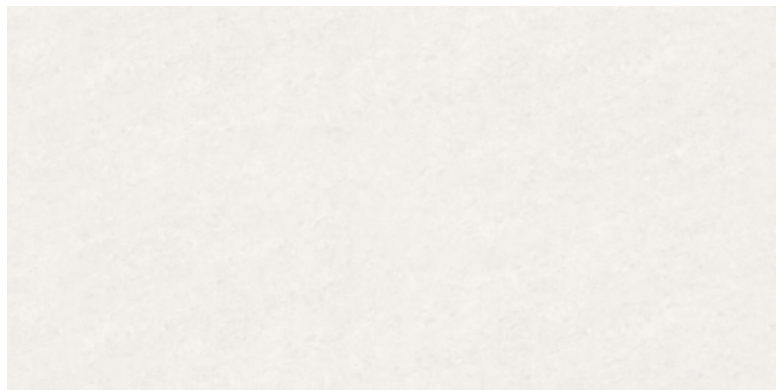
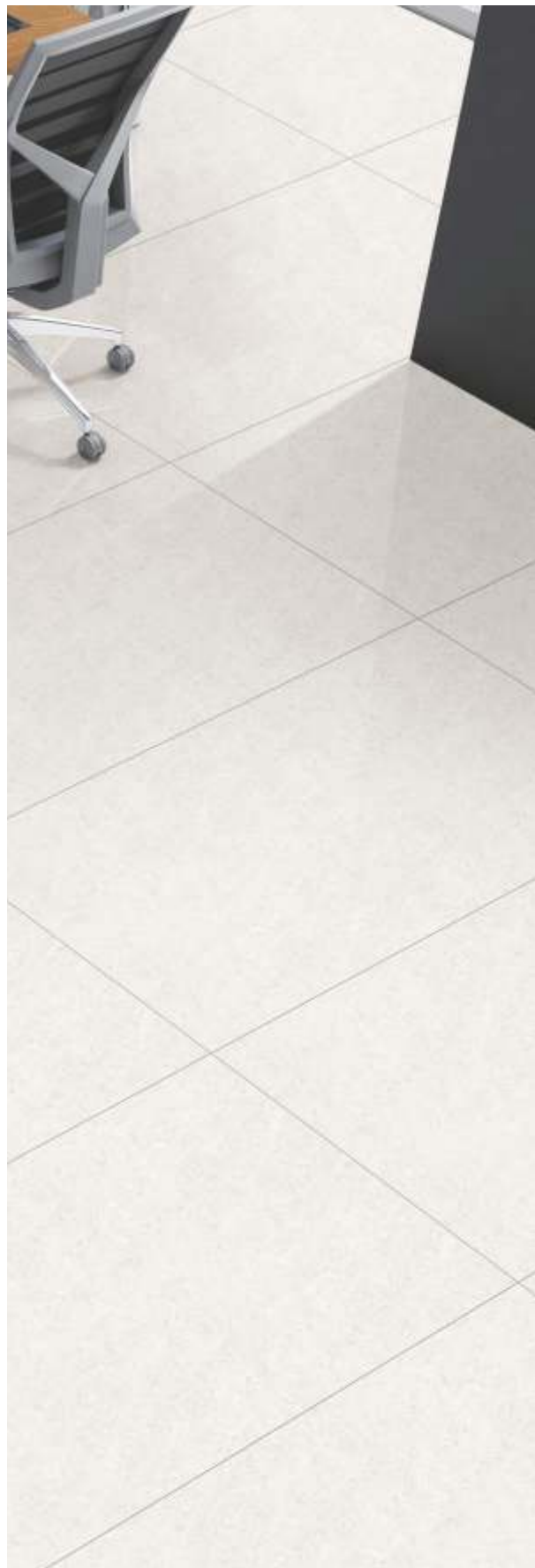
**SAPPHIRE**  
**600x1200 mm**

SUPER GLOSSY

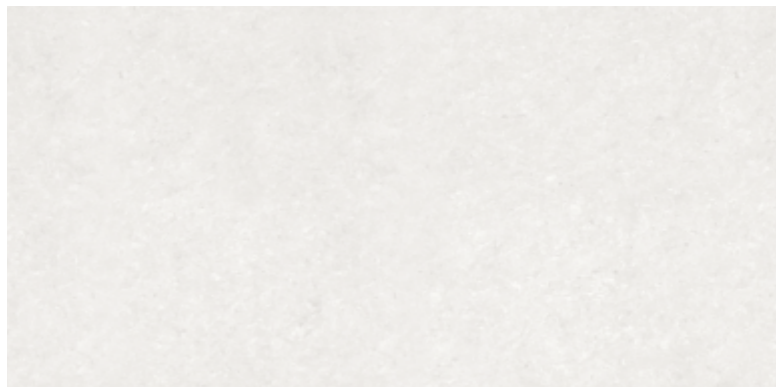
Double Charge Polished Vitrified Tiles



K 12647



K 12646



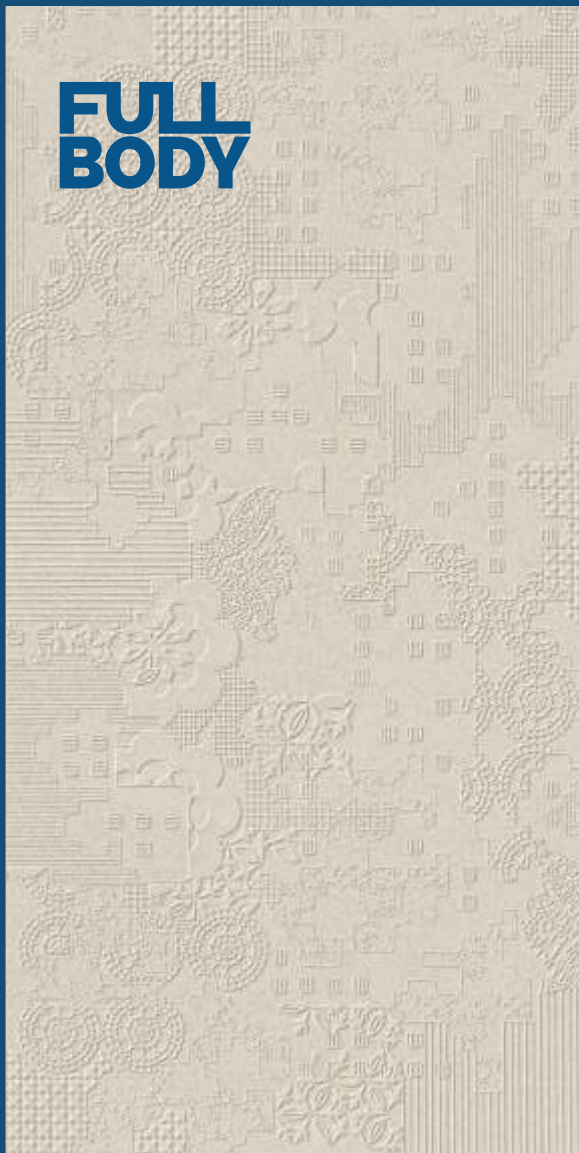
K 12647



# STONE ART

Size

**600x1200** mm



## THE AESTHETIC CULTURE

The Stone Art full-body collection reproduces the effects of the finest stone, combining the strength and durability of vitrified tiles. The tiles are available in five stunning textures - Plain, Geometric, Slate, Rock, and Liner - and come in nine colors. Kajaria's 600x1200 mm Stone Art full-body tiles introduce an aesthetic culture that enhances both indoor and outdoor spaces to a whole new level. These random vitrified tiles demonstrate superb resilience to harsh weather, making them ideal for high-traffic areas.

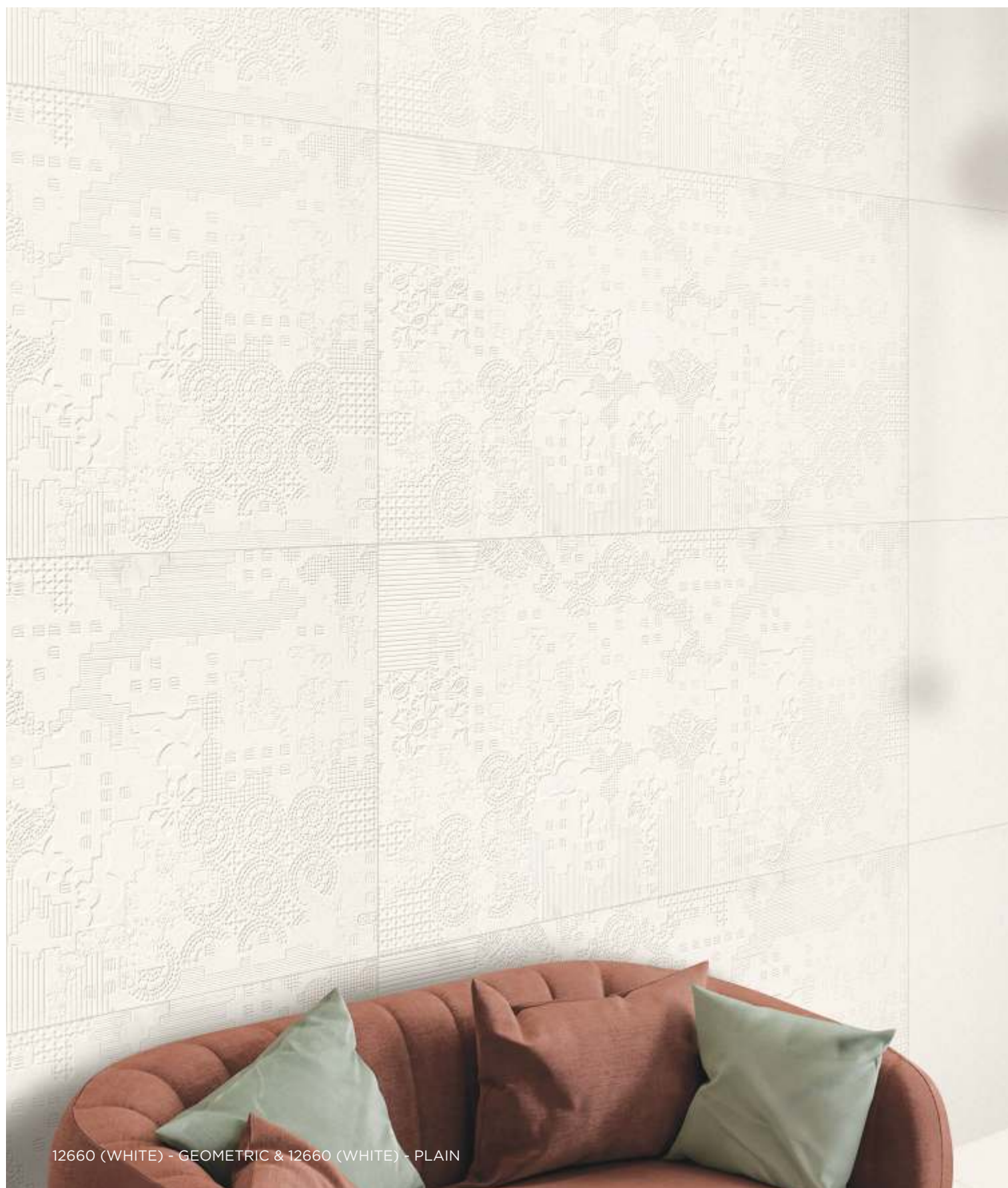
Full Body  
Vitrified Tiles



**STONE ART**  
**600x1200 mm**

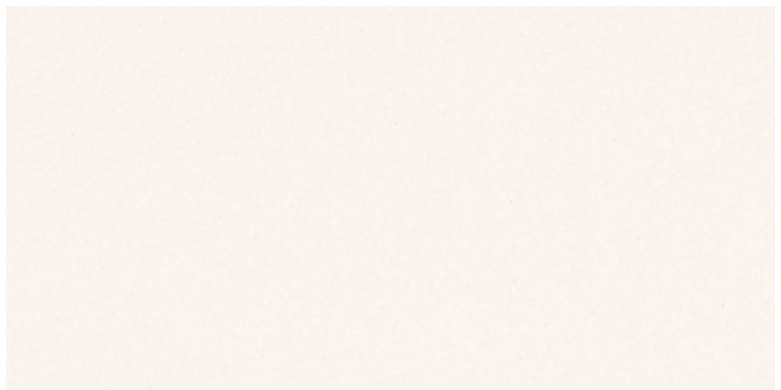
MATT

Full Body Vitrified Tiles



12660 (WHITE) - GEOMETRIC & 12660 (WHITE) - PLAIN

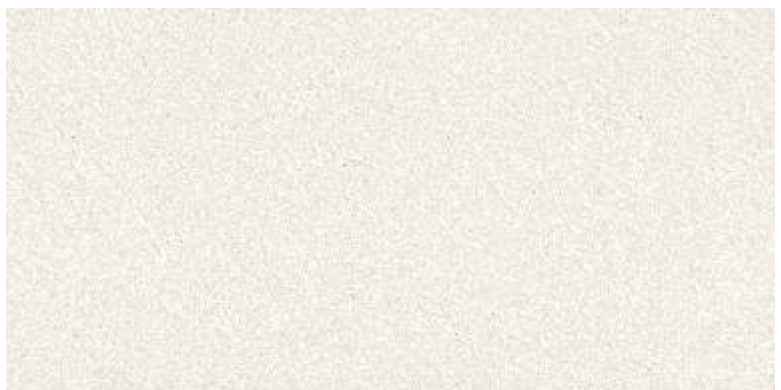




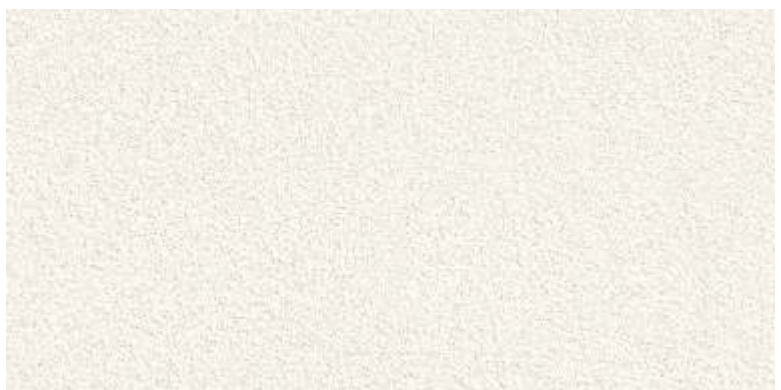
12660 (WHITE) - PLAIN



12660 (WHITE) - GEOMETRIC



12660 (WHITE) - SLATE



12660 (WHITE) - ROCK

## STONE ART

600x1200 mm

MATT

Full Body Vitrified Tiles



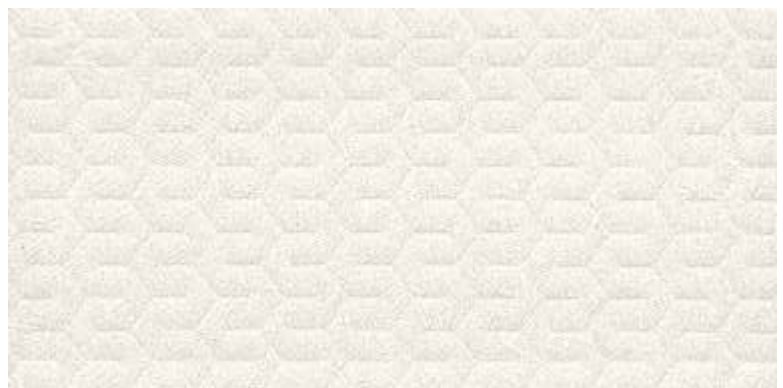
12660 (WHITE) - LINER



12660 (WHITE) - LINER



12660 (WHITE) - MAGIC



12660 (WHITE) - PENTAGON



12660 (WHITE) - HEXAGON



## STONE ART

600x1200 mm

MATT

Full Body Vitrified Tiles



12661 (CREMA) - PLAIN



12661 (CREMA) - GEOMETRIC



12661 (CREMA) - SLATE



12661 (CREMA) - ROCK





12661 (CREMA) - SLATE

## STONE ART

600x1200 mm

MATT

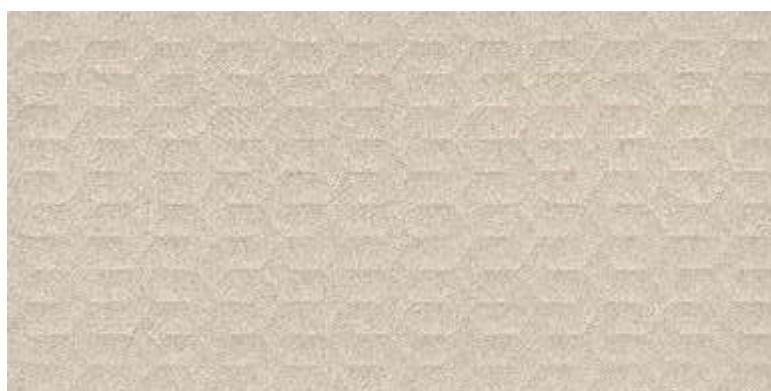
Full Body Vitrified Tiles



12661 (CREMA) - LINER



12661 (CREMA) - MAGIC



12661 (CREMA) - PENTAGON



12661 (CREMA) - HEXAGON





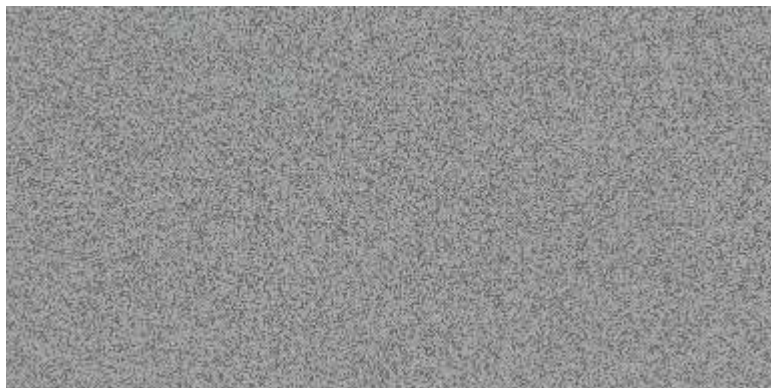
12661 (CREMA) - PENTAGON

## STONE ART

600x1200 mm

MATT

Full Body Vitrified Tiles



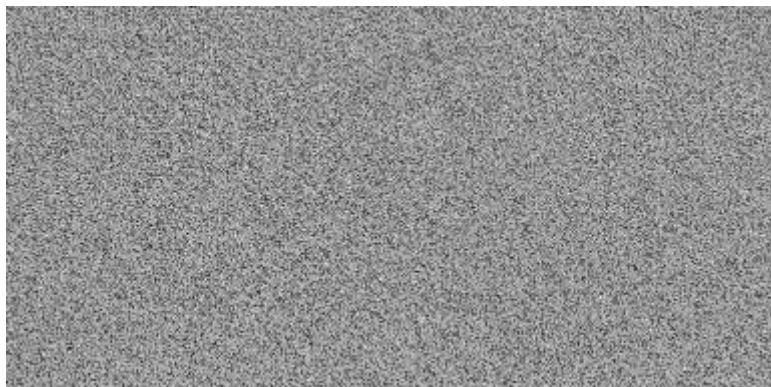
12662 (DARK GREY) - PLAIN



12662 (DARK GREY) - GEOMETRIC



12662 (DARK GREY) - SLATE



12662 (DARK GREY) - ROCK







12662 (DARK GREY) - ROCK

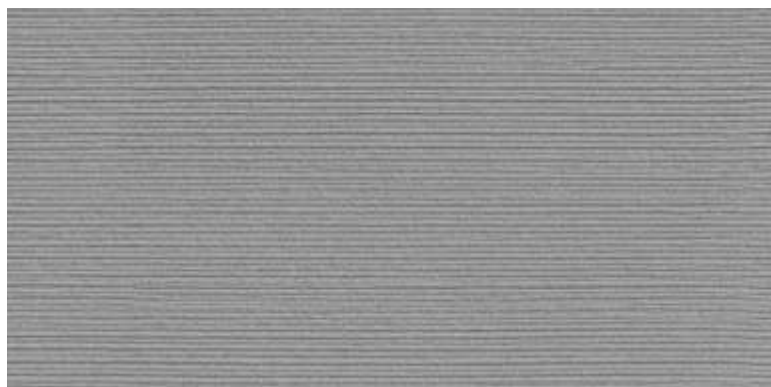


## STONE ART

600x1200 mm

MATT

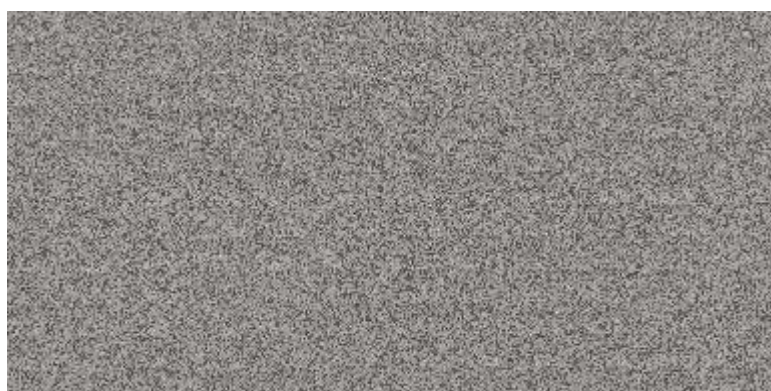
Full Body Vitrified Tiles



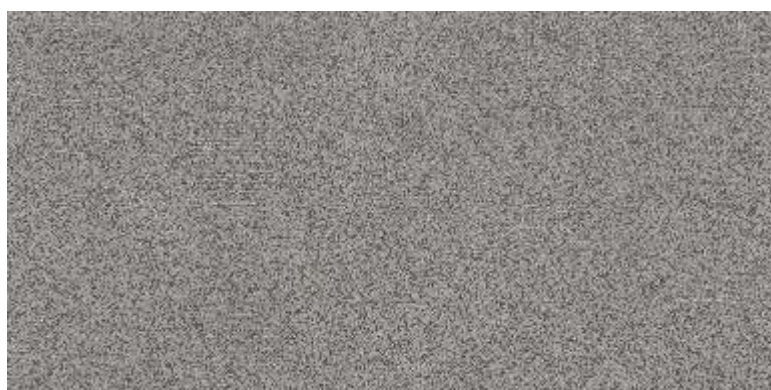
12662 (DARK GREY) - LINER



12662 (DARK GREY) - MAGIC



12662 (DARK GREY) - PENTAGON



12662 (DARK GREY) - HEXAGON



12662 (DARK GREY) - MAGIC & 12662 (DARK GREY) - PLAIN



## STONE ART

600x1200 mm

MATT

Full Body Vitrified Tiles



12663 (BROWN) - PLAIN



12663 (BROWN) - GEOMETRIC



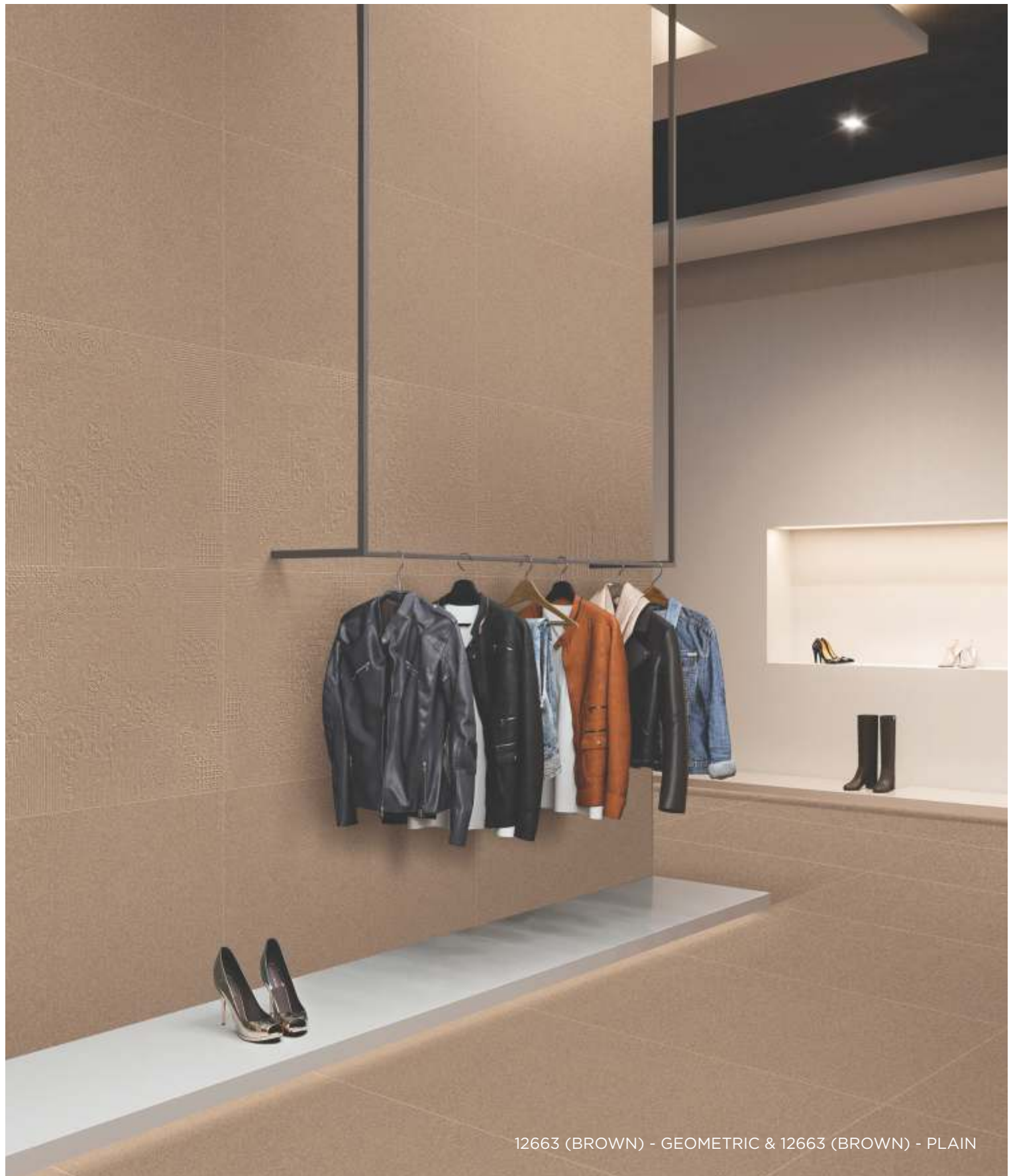
12663 (BROWN) - SLATE



12663 (BROWN) - ROCK





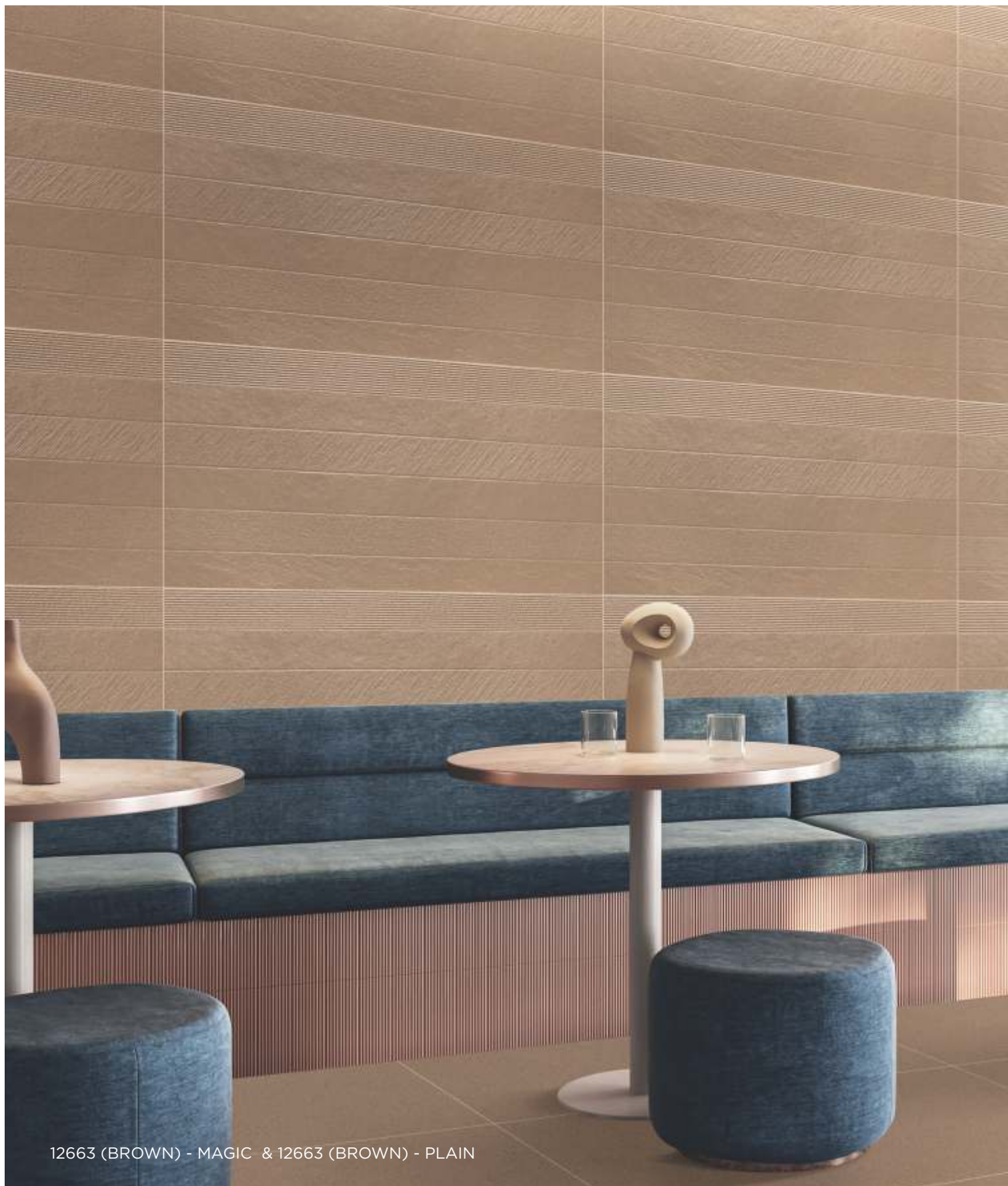


12663 (BROWN) - GEOMETRIC & 12663 (BROWN) - PLAIN

**STONE ART**  
**600x1200 mm**

MATT

Full Body Vitrified Tiles



12663 (BROWN) - MAGIC & 12663 (BROWN) - PLAIN





12663 (BROWN) - LINER



12663 (BROWN) - MAGIC



12663 (BROWN) - PENTAGON



12663 (BROWN) - HEXAGON



## STONE ART

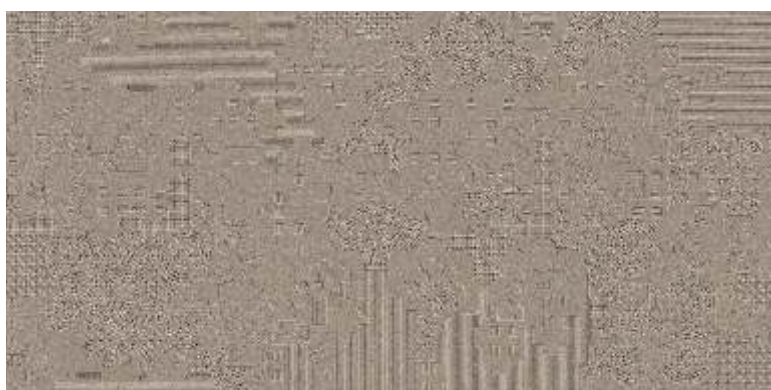
600x1200 mm

MATT

Full Body Vitrified Tiles



12664 (BARLEY) - PLAIN



12664 (BARLEY) - GEOMETRIC



12664 (BARLEY) - SLATE



12664 (BARLEY) - ROCK





12664 (BARLEY) - LINER & 12664 (BARLEY) - PLAIN

## STONE ART

600x1200 mm

MATT

Full Body Vitrified Tiles



12664 (BARLEY) - LINER



12664 (BARLEY) - MAGIC



12664 (BARLEY) - PENTAGON



12664 (BARLEY) - HEXAGON





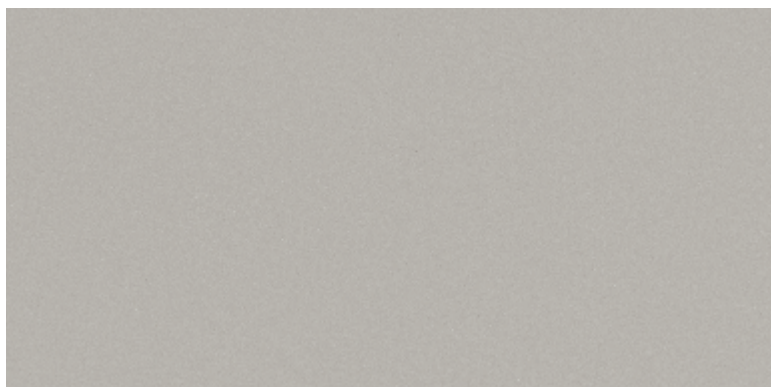
12664 (BARLEY) - HEXAGON

## STONE ART

600x1200 mm

MATT

Full Body Vitrified Tiles



12665 (GREY) - PLAIN



12665 (GREY) - GEOMETRIC



12665 (GREY) - SLATE



12665 (GREY) - ROCK







12665 (GREY) - GEOMETRIC



## STONE ART

600x1200 mm

MATT

Full Body Vitrified Tiles



12665 (GREY) - LINER



12665 (GREY) - MAGIC



12665 (GREY) - PENTAGON



12665 (GREY) - HEXAGON



12665 (GREY) - PENTAGON & 12665 (GREY) - PLAIN

## STONE ART

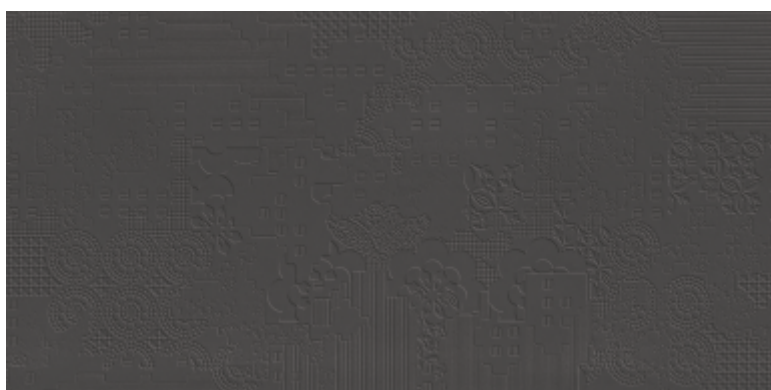
600x1200 mm

MATT

Full Body Vitrified Tiles



12666 (BLACK) - PLAIN



12666 (BLACK) - GEOMETRIC



12666 (BLACK) - SLATE



12666 (BLACK) - ROCK







12666 (BLACK) - PLAIN

## STONE ART

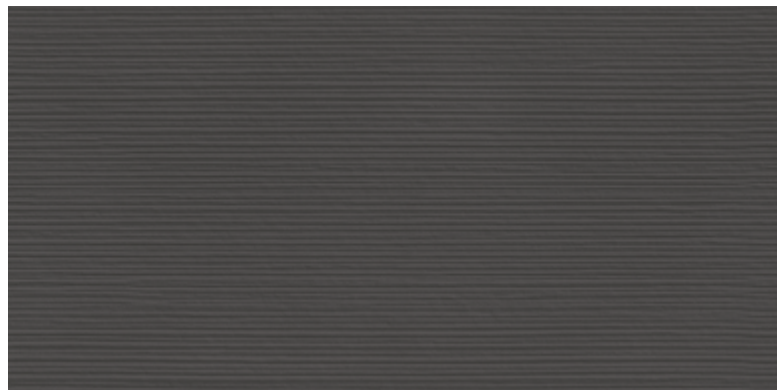
600x1200 mm

MATT

Full Body Vitrified Tiles



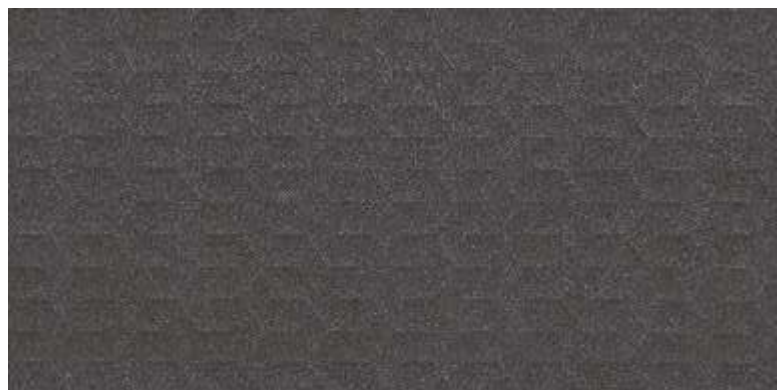
12666 (BLACK) - LINER



12666 (BLACK) - LINER



12666 (BLACK) - MAGIC



12666 (BLACK) - PENTAGON



12666 (BLACK) - HEXAGON



## STONE ART

600x1200 mm

MATT

Full Body Vitrified Tiles



12667 (JAISALEMER) - PLAIN



12667 (JAISALEMER) - PLAIN



12667 (JAISALEMER) - GEOMETRIC



12667 (JAISALEMER) - SLATE



12667 (JAISALEMER) - ROCK

## STONE ART

600x1200 mm

MATT

Full Body Vitrified Tiles



12667 (JAISALEMER) - LINER



12667 (JAISALEMER) - MAGIC



12667 (JAISALEMER) - PENTAGON



12667 (JAISALEMER) - HEXAGON





12667 (JAISALEMER) - MAGIC & 12667 (JAISALEMER) - PLAIN

## STONE ART

600x1200 mm

MATT

Full Body Vitrified Tiles



12668 (KOTA GREEN) - PLAIN



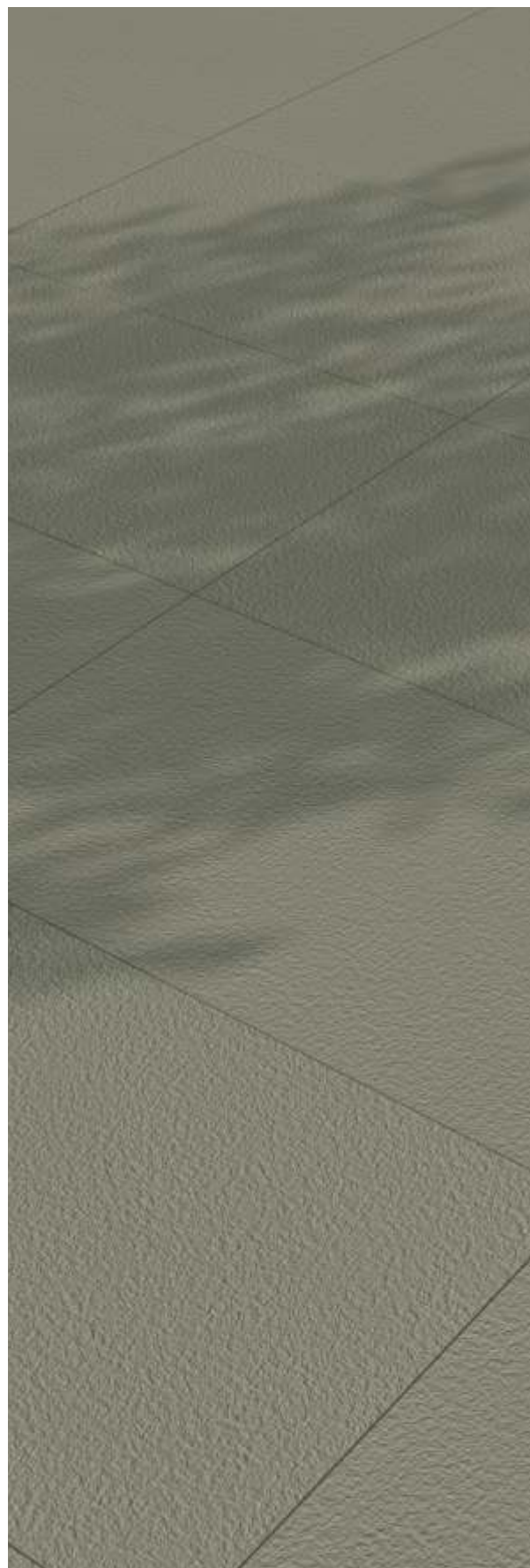
12668 (KOTA GREEN) - GEOMETRIC



12668 (KOTA GREEN) - SLATE



12668 (KOTA GREEN) - ROCK







12668 (KOTA GREEN) - ROCK



## STONE ART

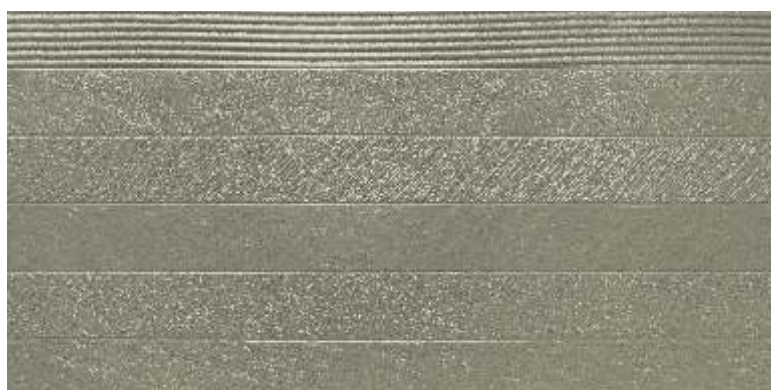
600x1200 mm

MATT

Full Body Vitrified Tiles



12668 (KOTA GREEN) - LINER



12668 (KOTA GREEN) - MAGIC



12668 (KOTA GREEN) - PENTAGON



12668 (KOTA GREEN) - HEXAGON



12668 (KOTA GREEN) - HEXAGON & 12668 (KOTA GREEN) - ROCK

# TERRAZZO

Size

600x1200 mm



## INNER BEAUTY WHICH CAPTIVATES

Terrazzo is a uniformly textured surface designed for interior & exterior use in which the matrix is depressed to expose the chips. The newer thin-set and epoxy-based terrazzo options are less labor intensive with greater design flexibility.

Full Body Vitrified Tiles  
Polished | Matt



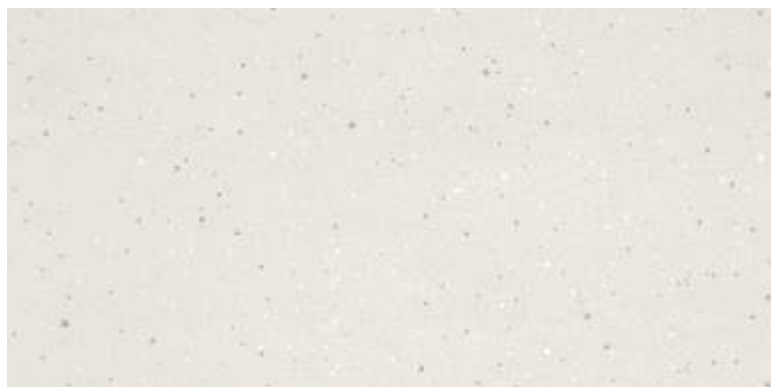


## TERRAZZO

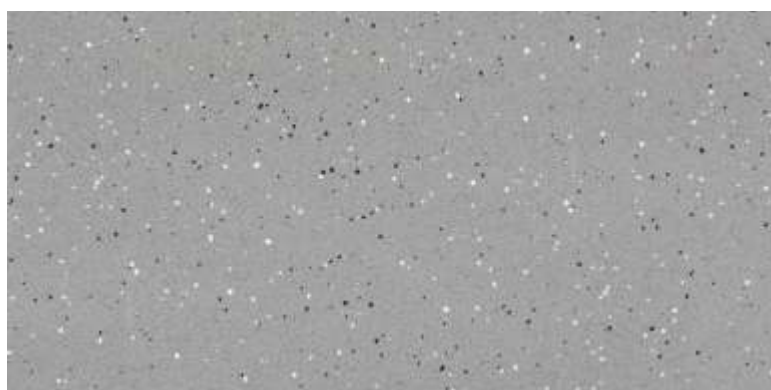
600x1200 mm

POLISHED / MATT

Full Body Vitrified Tiles



12671 - POLISHED/MATT



12672 - POLISHED/MATT



12681 - POLISHED/MATT



12684 - POLISHED/MATT





12671 & 12672



## TERRAZZO

600x1200 mm

POLISHED / MATT

Full Body Vitrified Tiles



12685 - POLISHED/MATT



12686 - POLISHED/MATT



12687 - POLISHED/MATT





12686

# STEP STONE

Size

**STEP - 300x1520 mm**  
**RISER - 200x1520 mm**

**STEP - 300x1200 mm**  
**RISER - 200x1200 mm**



## READY TO INSTALL STEPS AND RISERS

Stairs and staircases are not defined by their functionality alone. These practical units are also interesting from a design perspective as well-appointed stairs are today a defining feature in houses, rooms or hallways. Kajaria Step Stone Vitrified Steps and riser comes with different colours and shades, suits to your interior and exterior spaces.

Full Body  
Vitrified Tiles



# STEP STONE

READY TO INSTALL VITRIFIED STEPS



**SELF EMBOSSED  
TREAD LINES**



**ANTI SKID  
SURFACE**



**BULL NOSE  
FINISH**



**THICKNESS  
12 MM (STEPS)**



**WATER  
ABSORPTION  
<0.05%**



**FULL BODY  
VITRIFIED STEPS**



**EASY  
LAYING**

Highly durable, ideal for heavy traffic and commercial areas, Indoor & Outdoor.

Easy and speedy installation. Say goodbye to cumbersome cutting and finishing on site.

Embossed Tread Lines Provide extra grip for higher safety near step edge. Unique full bull nose edges

Provides higher strength and durability as desired in big size slabs. An assurance to replace natural stones in a confident way. Highest abrasion resistance

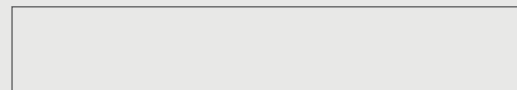
Ensures 10 times superior surface protection against wear and tear over natural stones.

Available in 8 beautiful Salt & Pepper shades. Suits the building theme, décor and desired contrast.

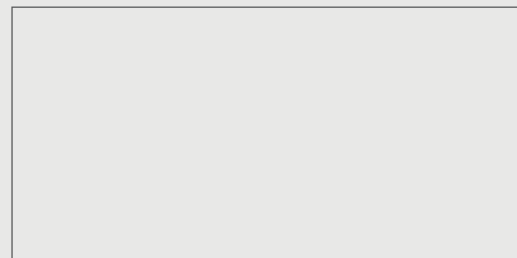
## Sizes available



steps 300x1520mm / 300x1200mm



riser 200x1520mm / 200x1200mm



landing area tile 605x1520mm / 600x1200mm

## STEP STONE

MATT

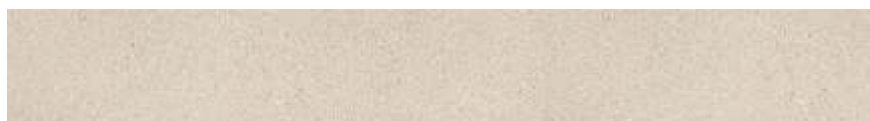
**STEP - 300x1520 mm | RISER - 200x1520 mm**

Full Body Vitrified Tiles



15351 | STEP

300x1520MM



15251 | RISER

200x1520MM



15352 | STEP

300x1520MM



15252 | RISER

200x1520MM

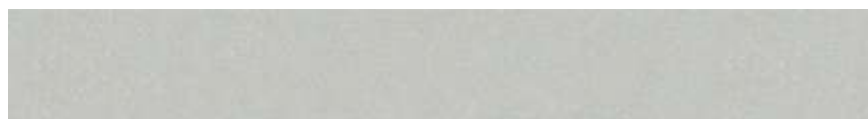


15352 - STEP, 15252 - RISER



15353 | STEP

300x1520MM



15253 | RISER

200x1520MM



15354 | STEP

300x1520MM



15254 | RISER

200x1520MM



15355 | STEP

300x1520MM



15255 | RISER

200x1520MM



15356 | STEP

300x1520MM



15256 | RISER

200x1520MM

Landing tiles  
 are available  
 in the size of  
 605x1520 mm



STEP STONE

MATT

STEP - 300x1200 mm | RISER - 200x1200 mm

Full Body Vitrified Tiles



12351 | STEP 300x1200MM



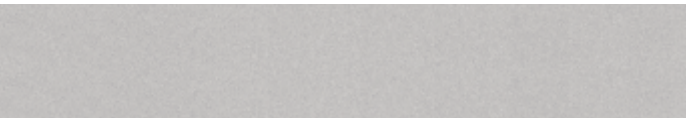
12251 | RISER 200x1200MM



12651 | LANDING AREA TILE 600x1200MM



12353 | STEP 300x1200MM



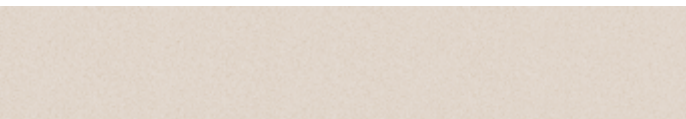
12253 | RISER 200x1200MM



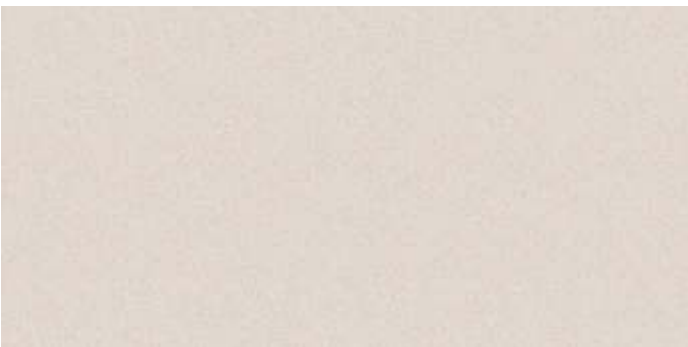
12653 | LANDING AREA TILE 600x1200MM



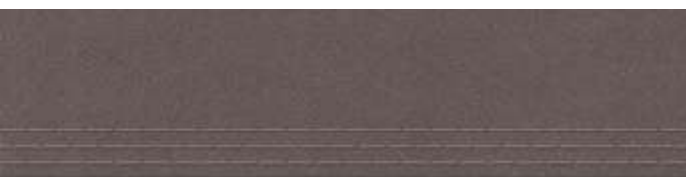
12352 | STEP 300x1200MM



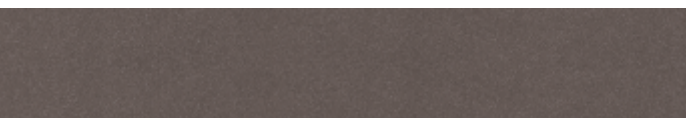
12252 | RISER 200x1200MM



12652 | LANDING AREA TILE 600x1200MM



12354 | STEP 300x1200MM



12254 | RISER 200x1200MM

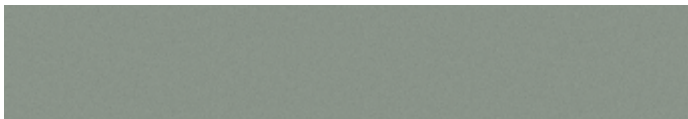


12654 | LANDING AREA TILE 600x1200MM



12355 | STEP

300x1200MM



12255 | RISER

200x1200MM



12655 | LANDING AREA TILE

600x1200MM



12355 - STEP, 12255 - RISER & 12655 - LANDING AREA

STEP STONE

MATT

STEP - 300x1200 mm | RISER - 200x1200 mm

Full Body Vitrified Tiles



12356 | STEP

300x1200MM



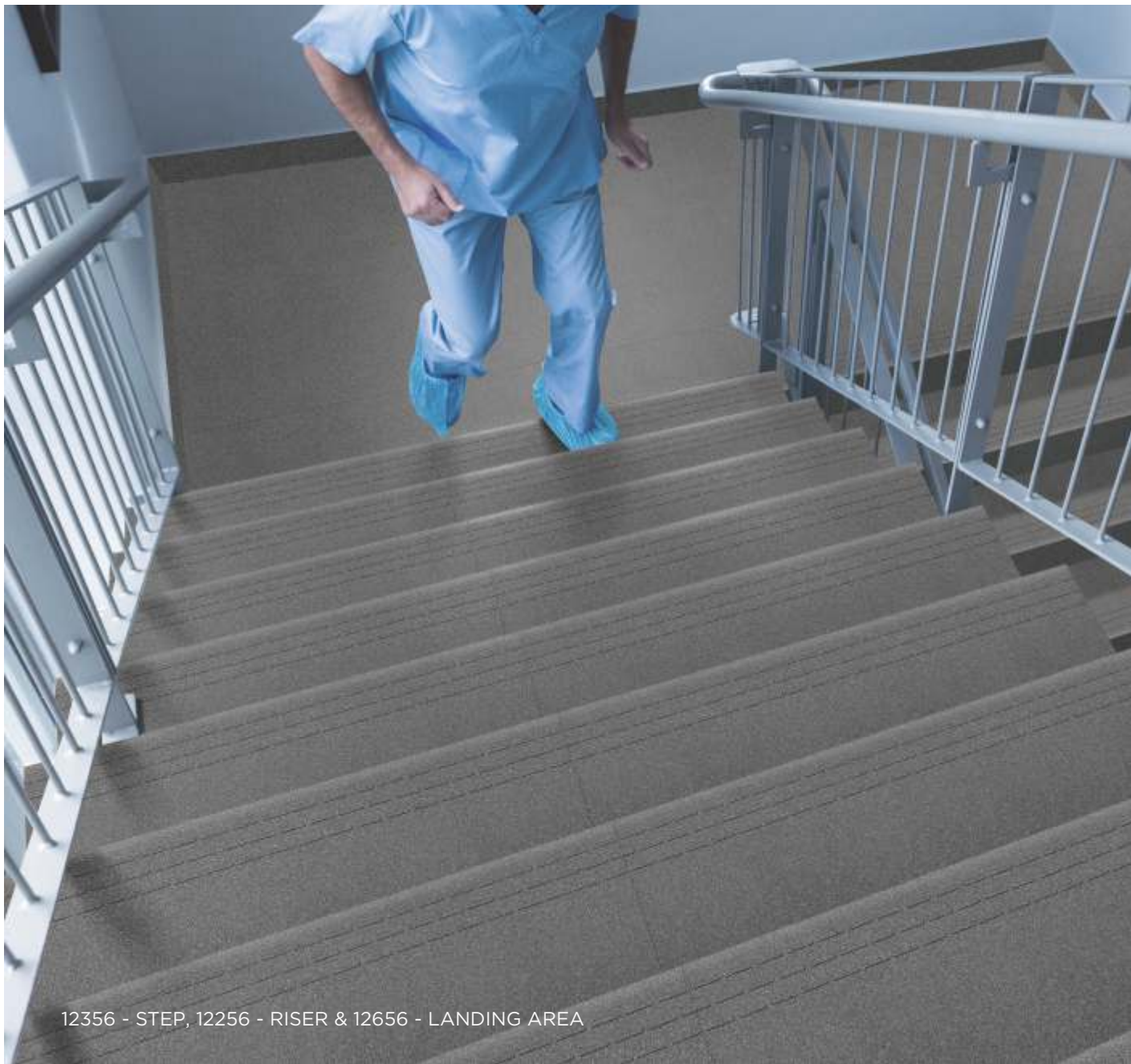
12256 | RISER

200x1200MM



12656 | LANDING AREA TILE

600x1200MM



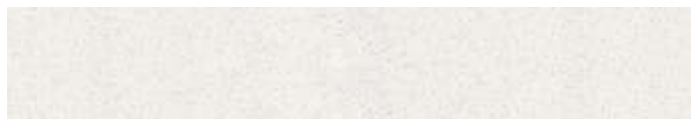
12356 - STEP, 12256 - RISER & 12656 - LANDING AREA





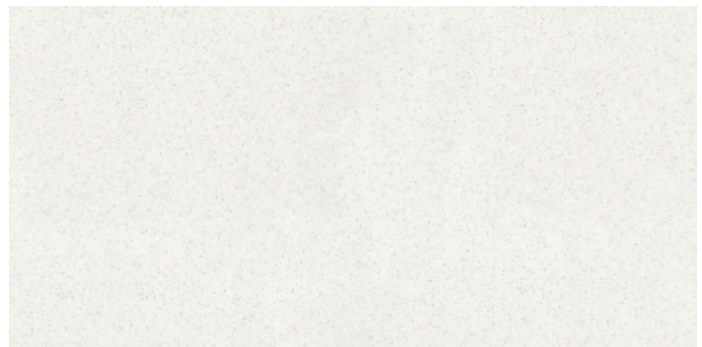
12357 | STEP

300x1200MM



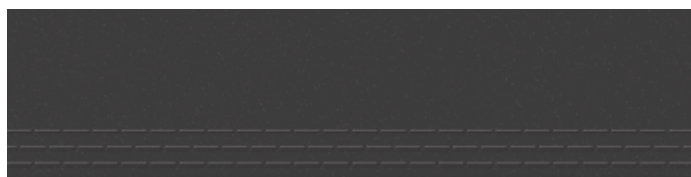
12257 | RISER

200x1200MM



12657 | LANDING AREA TILE

600x1200MM



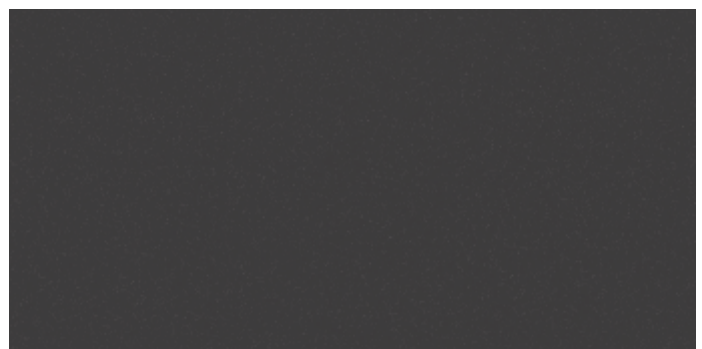
12358 | STEP

300x1200MM



12258 | RISER

200x1200MM



12658 | LANDING AREA TILE

600x1200MM



12357 - STEP & 12657 - RISER

# STONEGRES PLUS

Size

600x1200 mm

**FULL  
BODY**

## JOURNEY INTO YOURSELF

STONE GRES PLUS is able to evoke the beauty of antique stone paving, natural effect stones that provide a unique touch to any setup.

STONEGRES PLUS is ideal to create passageways in modern gardens terraces and patios as well as interior and heavy transit area.

Full Body Vitrified Tiles  
Polished | Matt



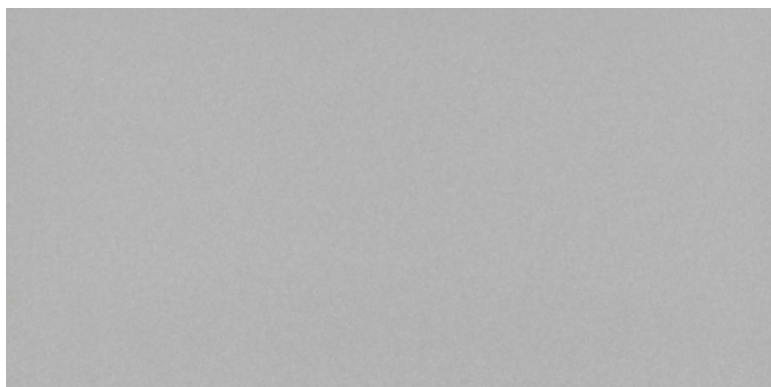


## STONEGRES PLUS

600x1200 mm

POLISHED / MATT

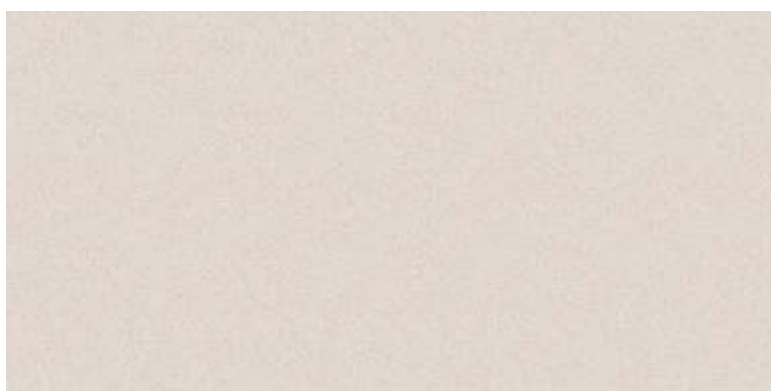
Full Body Vitrified Tiles



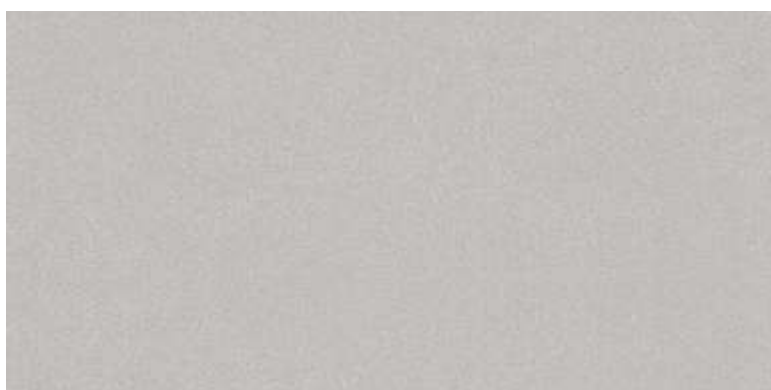
12650 - POLISHED/MATT



12651 - POLISHED/MATT



12652 - POLISHED/MATT



12653 - POLISHED/MATT





12651



## STONEGRES PLUS

600x1200 mm

POLISHED / MATT

Full Body Vitrified Tiles

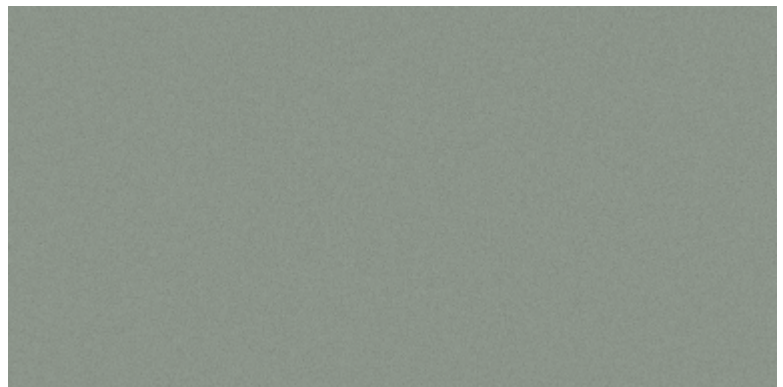


12656





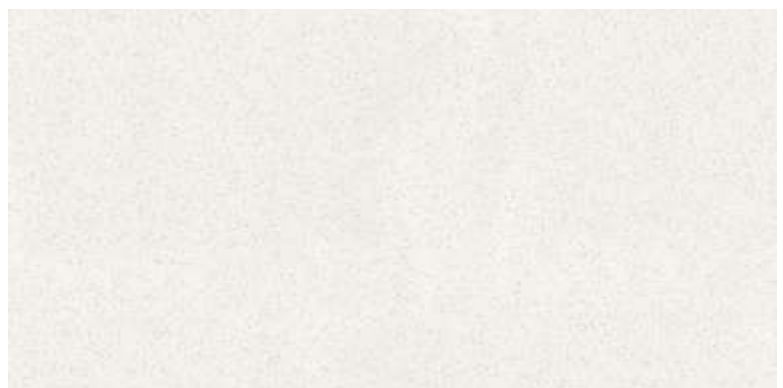
12654 - POLISHED/MATT



12655 - POLISHED/MATT



12656 - POLISHED/MATT



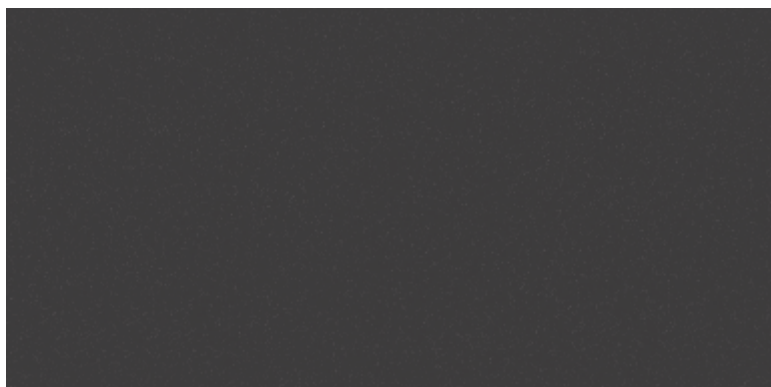
12657 - POLISHED/MATT

## STONEGRES PLUS

600x1200 mm

POLISHED / MATT

Full Body Vitrified Tiles



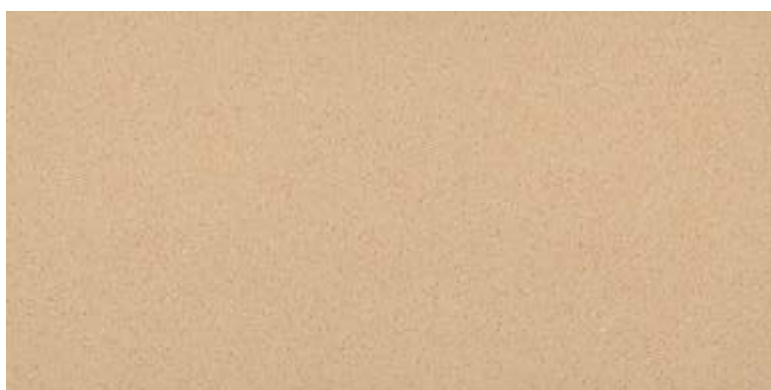
12658 - POLISHED/MATT



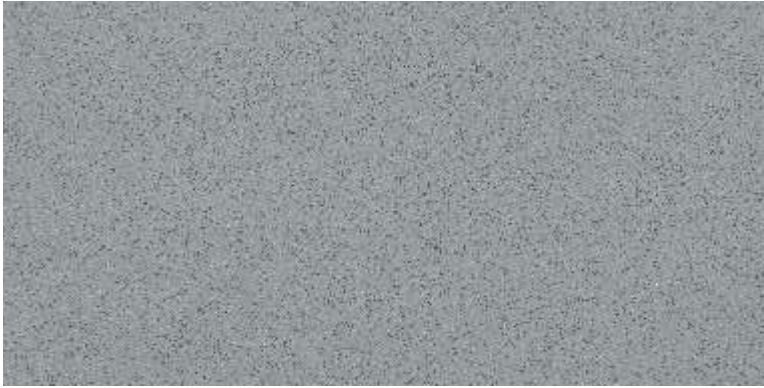
12659 - POLISHED/MATT



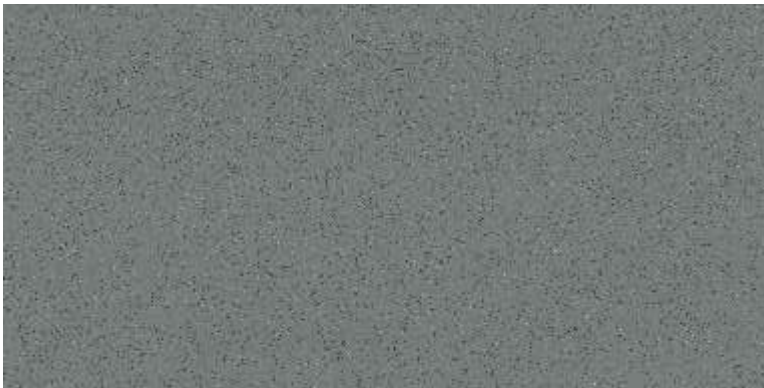
12751 - POLISHED/MATT



12752 - POLISHED/MATT



12753 - POLISHED/MATT



12754 - POLISHED/MATT



12753



# STONEGRES NEO

Size

600x1200 mm



## TOUGH BUILD AND UNMATCHED QUALITY

Kajaria presents STONE GRES NEO Full Body Tiles in a 600x1200mm size, crafted using the finest raw materials and advanced technology. Designed for exceptional durability, these tiles ensure long-lasting performance with minimal wear and tear. Their uniform color runs throughout, maintaining consistency in shape, size, and appearance. This seamless and sophisticated design enhances any space, retaining its elegance and vibrancy for years without fading.

Full Body Vitrified Tiles  
Polished | Matt

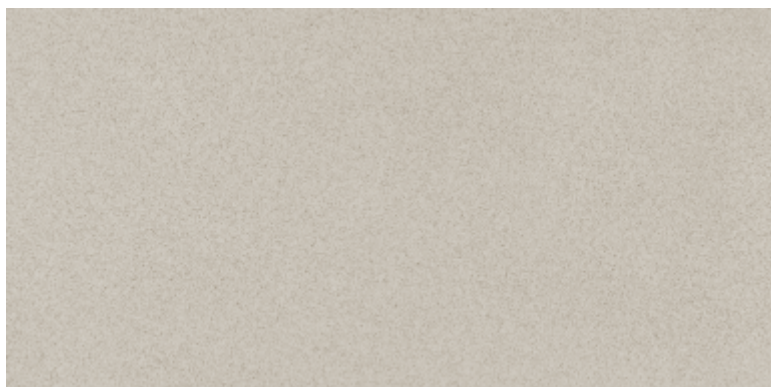


## STONEGRES NEO

600x1200 mm

POLISHED / MATT

Full Body Vitrified Tiles



12691

MATT / POLISHED



12692

MATT / POLISHED



12693

MATT / POLISHED



12694

MATT / POLISHED





12695

MATT / POLISHED



12696

POLISHED

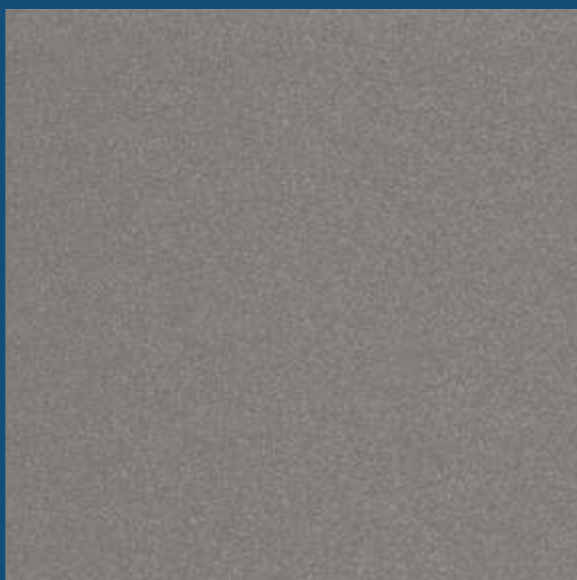


12696

# STONEGRES NEO

Size

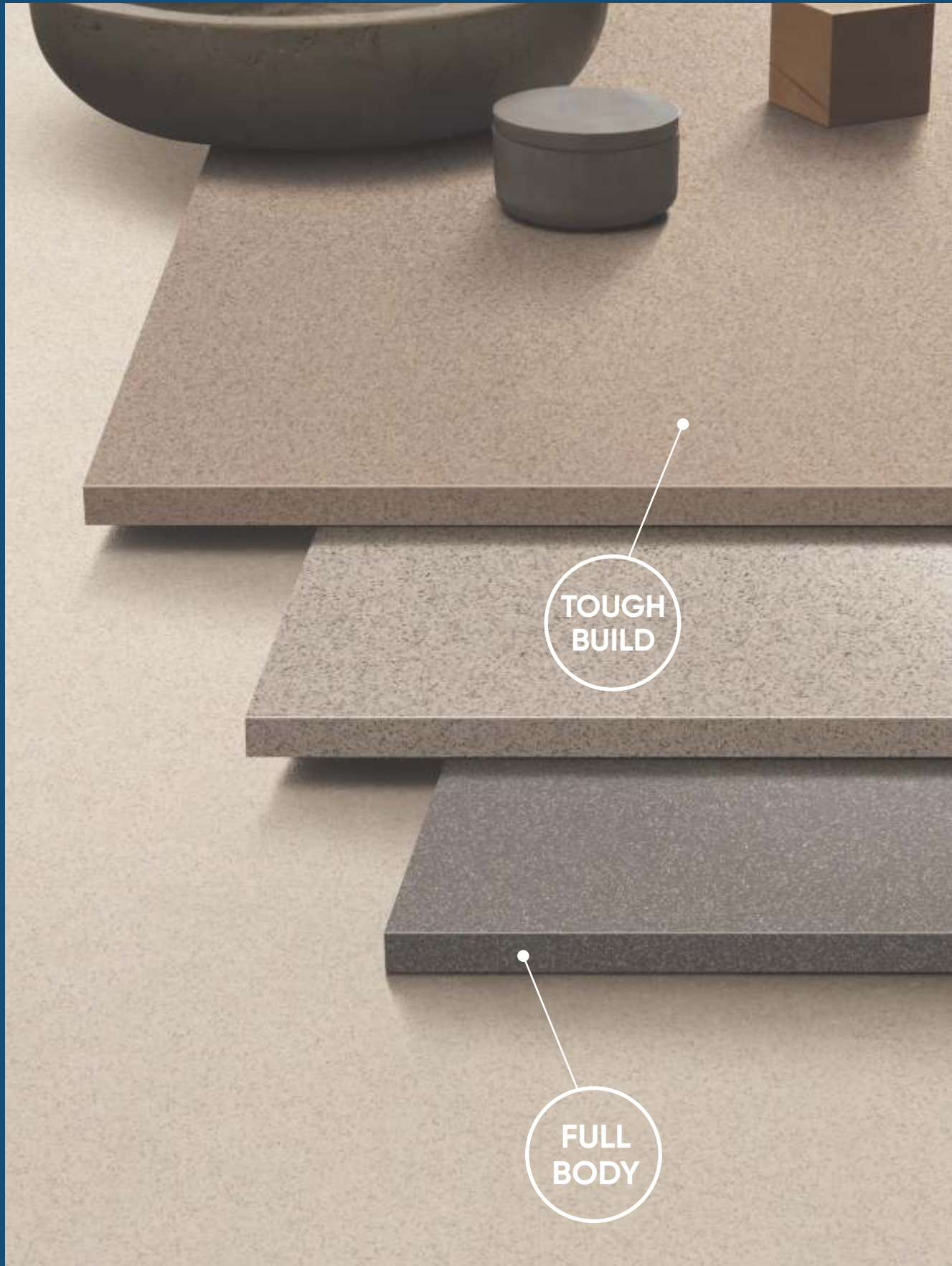
**600x600** mm



## REMARKABLE STRENGTH & STYLE

STONE GRES NEO built with the best raw materials and technology, these full body tiles offer a sturdy, lasting performance for years with minimum wear and tear. These tiles have a uniform colour throughout and are consistent in their shape, size, and colour. This adds a classy and seamless look to your spaces that looks great for years without fading.

Full Body Vitrified Tiles  
Polished / Matt





## STONEGRES NEO

600x600 mm

POLISHED / MATT

Full Body Vitrified Tiles



K 6702



K 6700 - POLISHED / MATT



K 6701 - POLISHED / MATT



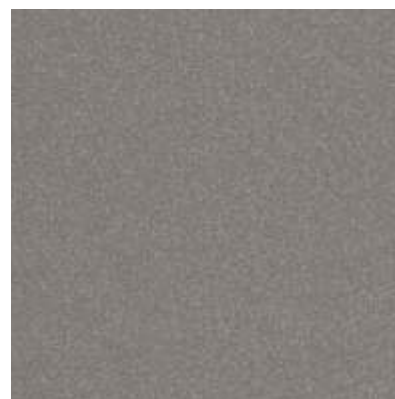
K 6702 - POLISHED / MATT



K 6704 - POLISHED / MATT



K 6705 - POLISHED / MATT



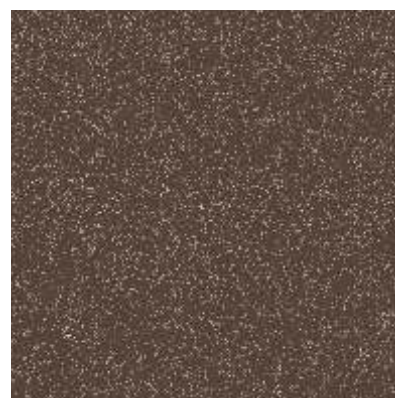
K 6706 - POLISHED / MATT



K 6707 \* - POLISHED / MATT



K 6708 \* - POLISHED / MATT



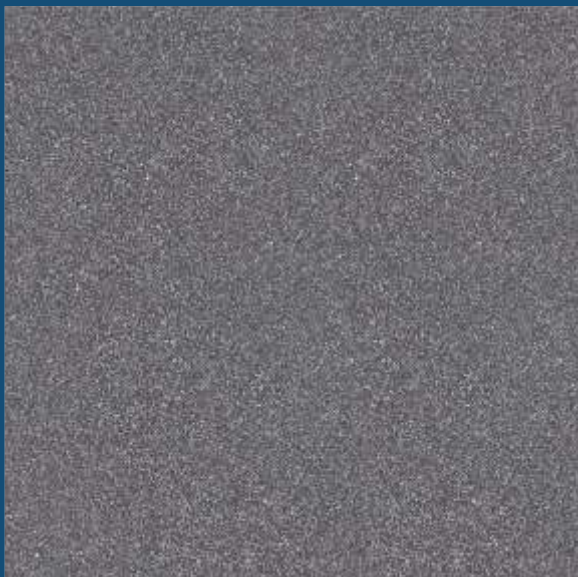
K 6709 \* - POLISHED / MATT

\* Only for North and East Zone

# STONEGRES

Size

600x600 mm



## TIMELESS APPEAL, LASTING IMPRESSIONS

STONE GRES is able to evoke the beauty of antique stone paving, natural effect stones that provide a unique touch to any setup. STONE GRES is ideal to create passageways in modern gardens terraces and patios as well as interior and heavy transit area.

Full Body Vitrified Tiles  
Polished / Matt





## STONEGRES

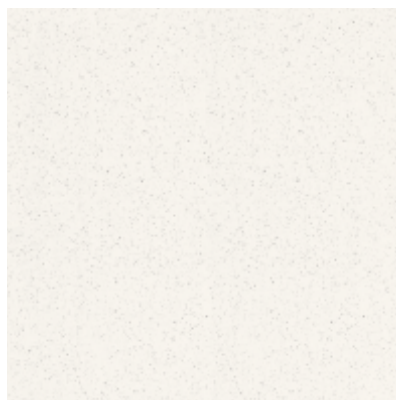
600x600 mm

POLISHED / MATT

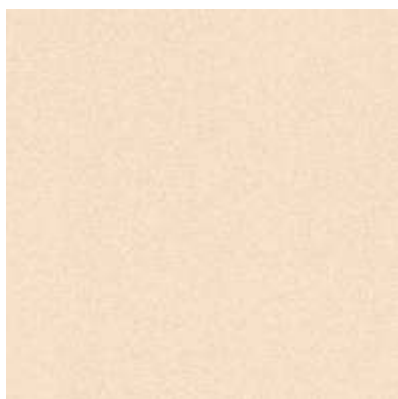
Full Body Vitrified Tiles



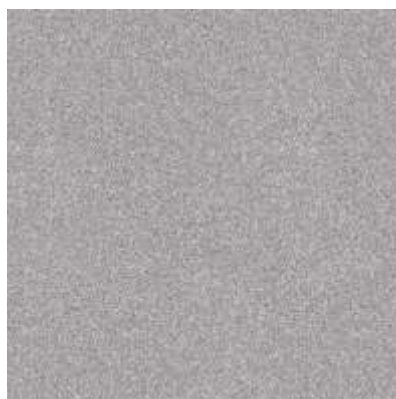
K 6601 - POLISHED / MATT



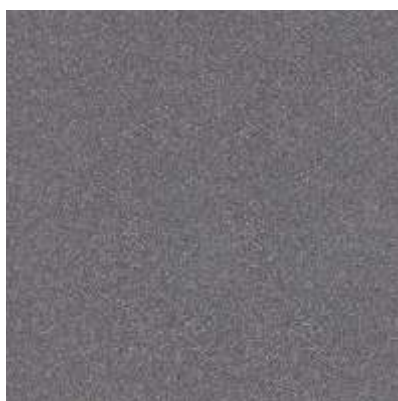
K 6602 - POLISHED / MATT



K 6603 - POLISHED / MATT



K 6604 - POLISHED / MATT



K 6605 - POLISHED / MATT





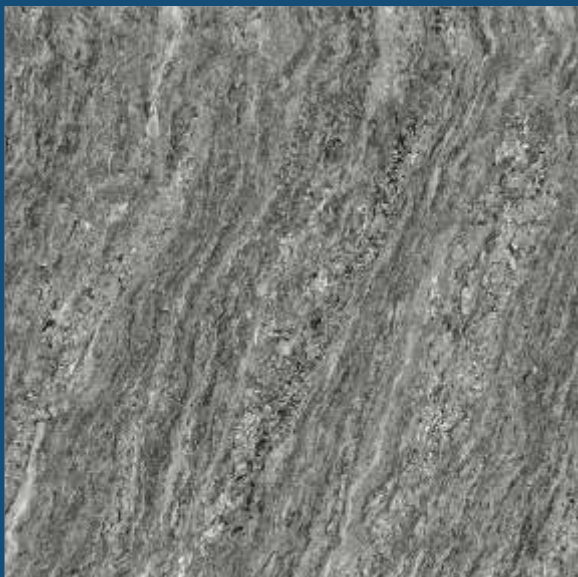
K 6605



# AMAZON

Size

**600x600** mm



## ITALIAN BEAUTY AMAZING STRENGTH

Amazon series by Kajaria inspired by tradition and the most beautiful Italian natural stones, obtained through the use of the most advanced production technologies. The double charge surface represent something unique in terms of the refinement of the details that always original and distinctive. The appearance of polished marble floors and the refined beauty of classical surfaces has now become Amazon - Double Charge Polished Vitrified Tiles.

Polished Italian  
Vitrified Tiles



**AMAZON**  
**600x600 mm**

SUPER GLOSSY

Polished Italian Vitrified Tiles



K 6411





K 6401



K 6402



K 6403



K 6404



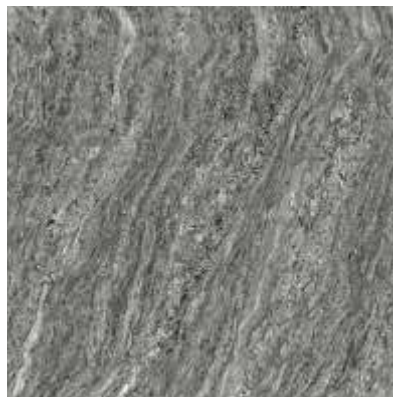
K 6405



K 6406



K 6407



K 6411



K 6413

# DOUBLE CHARGE

Size

**600x600 mm**



## LIGHT UP YOUR IMAGINATION

A range of Double Charge Polished Vitrified Tiles that comprises the finest quality tiles for you to transform your space. The Double Charged Series incorporates tiles designed to enthrall one's senses with sophisticated shades inspired by the beauty of natural stone. Ideal for both homes as well as corporate offices, the Double Charged Series is the new definition of beauty. These double charge tiles are further protected through modern Nano-Technology and super shined through superior modern polishing which adds premium look to your flooring.

Double Charge  
Polished Vitrified Tiles





## DOUBLE CHARGE

600x600 mm

SUPER GLOSSY

Polished Vitrified Tiles



K 6207



K 6032



K 6201



K 6203



K 6204\*



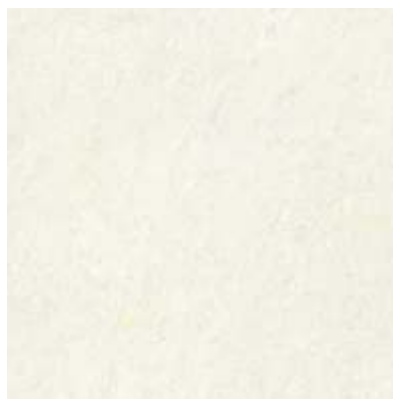
K 6205



K 6206



K 6207



K 6209\*

\* Only for North and East Zone

## DOUBLE CHARGE

600x600 mm

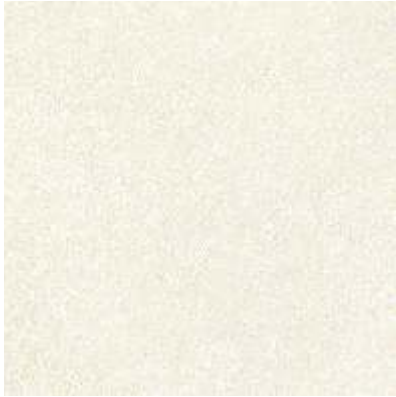
SUPER GLOSSY

Polished Vitrified Tiles



K 6217





K 6210\*



K 6211



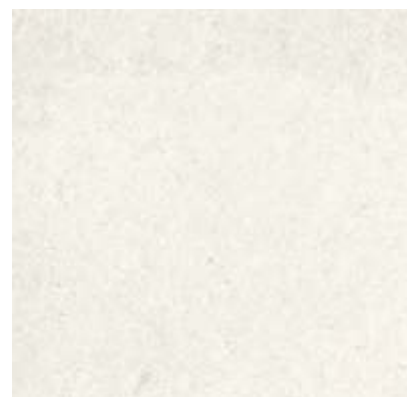
K 6212



K 6213\*



K 6214\*



K 6217



K 6218



K 6219



K 6223\*

\* Only for North and East Zone

## DOUBLE CHARGE

600x600 mm

SUPER GLOSSY

Polished Vitrified Tiles



K 6302



K 6301\*



K 6302\*



K 6306



K 6341



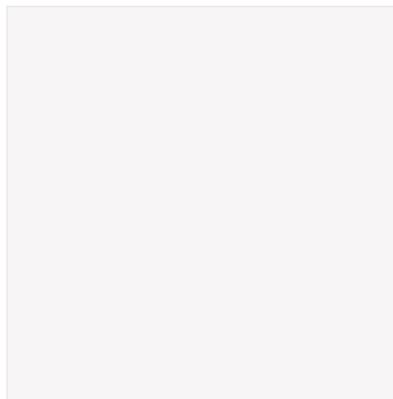
K 6342



K 6343



K 6344



K 7000

SPECIAL PLAIN COLOUR

\* Only for North and East Zone



**CLASSIC**  
**600x600 mm**

SUPER GLOSSY

Double Charge Polished Vitrified Tiles



K 6353



K 6351 \*



K 6352 \*



K 6353 \*



K 6354 \*



K 6355 \*



K 6356 \*



K 6357 \*



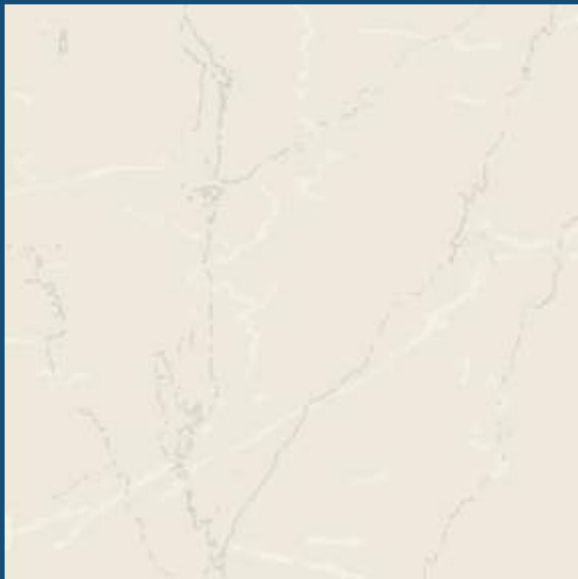
K 6356

\* Only for North and East Zone

# ELEGANT SOLUBLE SALT

Size

**600x600 mm**



## REDISCOVER ELEGANCE AND STYLE

An exceptional range of soluble salt tiles that exude the attractiveness and splendor of the spaces. The range of tiles is light in weight yet sturdy, available in varied elegant and fancy textures. The Elegant Soluble Salt collection is available in different styles to fit the needs of traditional as well as modern spaces. This range brings together the sophisticated look of high gloss finish combined with superior functionality. The unmatched physical and chemical properties coupled with matchless designs make these tiles suitable for all settings.

Polished  
Vitrified Tiles



**Kajaria**  
**VITRONITE**

SLABS | FULL BODY | OUTDOOR | DOUBLE CHARGE

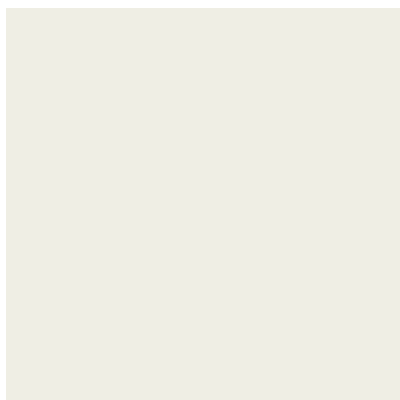


## ELEGANT SOLUBLE SALT

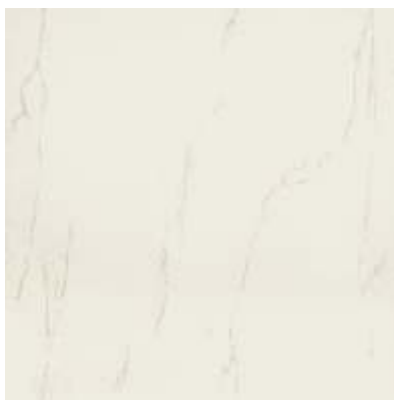
600x600 mm

SUPER GLOSSY

Polished Vitrified Tiles



K 6000



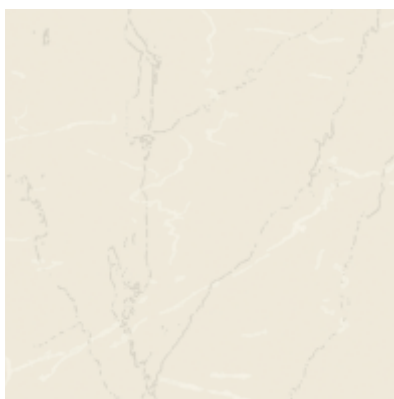
K 6002



K 6008



K 6010



K 6014



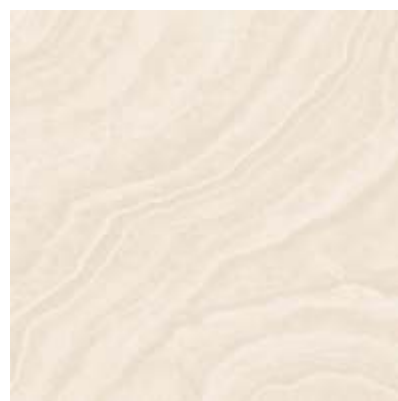
K 6018



K 6019



K 6107



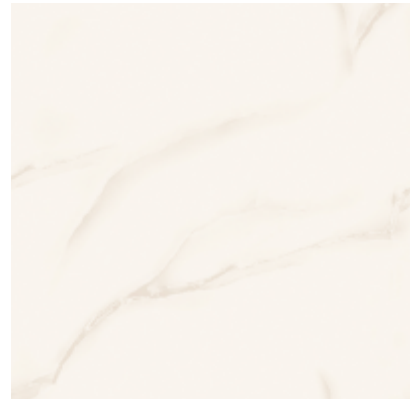
MARBELLA



DYNA



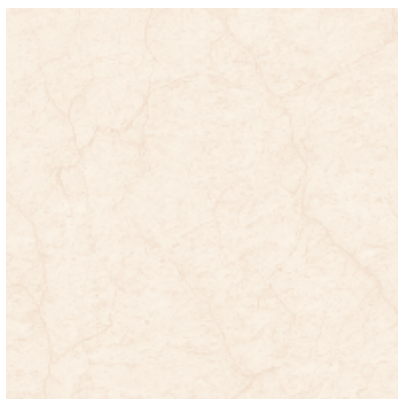
THUNDERSTORM



CICILIA



WOODENZA



CRACK



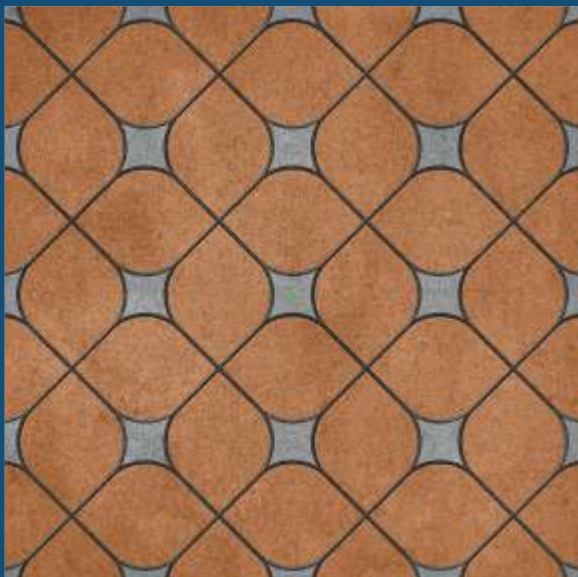
THUNDERSTORM



# DURATECH XT

Size

**600x600 mm**



## AESTHETIC AND FUNCTIONAL

Selecting the right materials is essential for creating spaces that are both stylish and functional, especially in high-traffic outdoor areas. Kajaria Duratech XT Heavy Duty Vitrified Tiles seamlessly blend elegance with durability, offering exceptional strength, surface hardness, and load-bearing capacity. Suitable for both indoor and outdoor applications, they are ideal for pedestrian walkways, vehicular zones, terraces, balconies, swimming pools, airports, metros, industrial sites, parking lots, and more. With superior resilience and artistic designs, Duratech XT tiles enhance spaces while standing up to the toughest conditions.

Heavy Duty Outdoor  
Vitrified Tiles



**12<sub>mm</sub>**

ULTRATHICK OUTDOOR VITRIFIED TILES

**<0.10**

WATER ABSORPTION



## DURATECH XT

600x600 mm

MATT

Heavy Duty Outdoor Vitrified Tiles



K 7015





K 7013



K 7015



K 7016



K 7017



K 7018



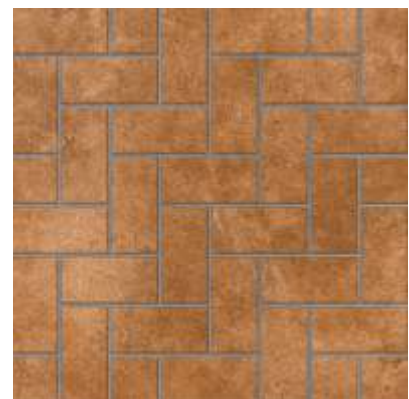
K 7019



K 7032



K 7039



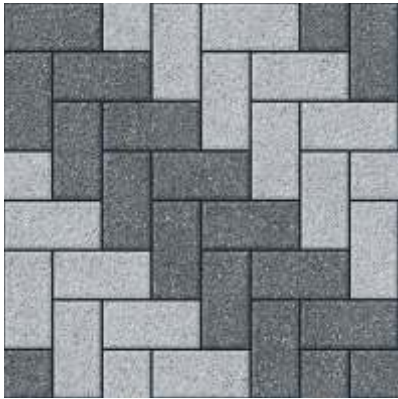
K 7040

## DURATECH XT

600x600 mm

MATT

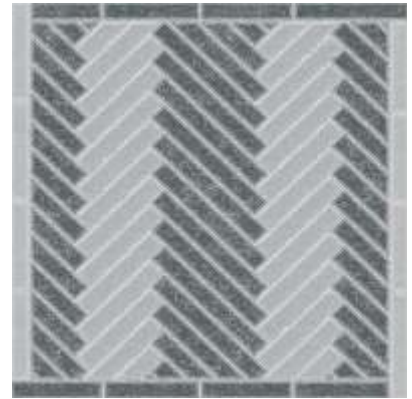
Heavy Duty Outdoor Vitrified Tiles



K 7041



K 7042



K 7043



K 7044



K 7067



K 7094



K 7101



K 7102



K 7103







## DURATECH XT

600x600 mm

MATT

Heavy Duty Outdoor Vitrified Tiles



K 7107 & K 7108



K 7104



K 7105



K 7106



K 7107



K 7108



K 7109



K 7110



K 7111



K 7112



## DURATECH XT

600x600 mm

MATT

Heavy Duty Outdoor Vitrified Tiles



K 7115





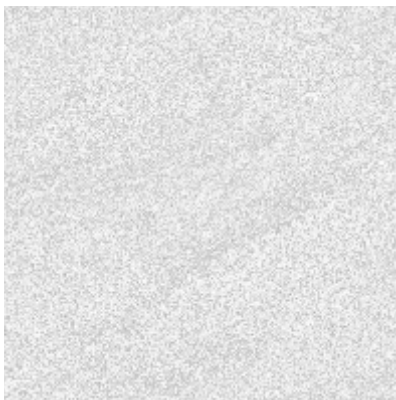
K 7113



K 7114



K 7115



K 7116



K 7117



K 7118



K 7119



K 7120

# DURATECH

Size

400x400 mm



## WHERE STYLE MEETS FUNCTION

Choosing the right materials is key to creating both aesthetic and functional spaces, especially for high-traffic outdoor areas. Kajaria Duratech Heavy Duty Vitrified Tiles offer the perfect combination of elegance and durability, ensuring superior strength, surface hardness, and load-bearing capacity. Ideal for both indoor and outdoor use, they are perfect for pedestrian and vehicular areas, terraces, balconies, swimming pools, airports, metros, industrial sites, parking lots, and more. With unmatched resilience and artistic designs, Duratech tiles are built to withstand the toughest conditions while enhancing any space.

Heavy Duty Outdoor  
Vitrified Tiles





**12<sup>mm</sup>**  
ULTRATHICK OUTDOOR VITRIFIED TILES

**<0.10**  
WATER ABSORPTION



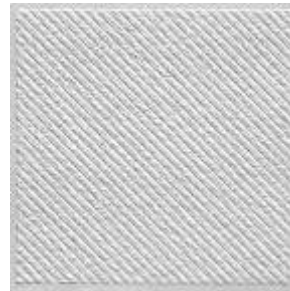
**DURATECH**

**400x400 mm**

MATT

Heavy Duty Outdoor Vitrified Tiles

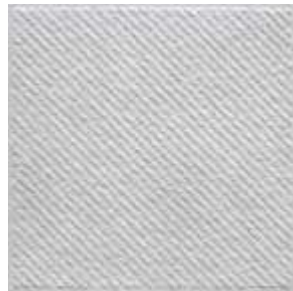




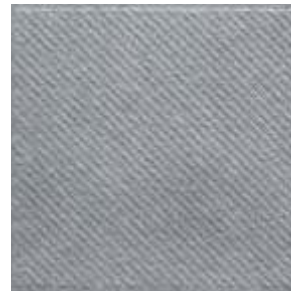
4011 A



4012 A



4013 B



4014 B



4016 B



4017 C ■■



4018 C ■■



4019 C ■■



4021 E



4022 E



4023 E



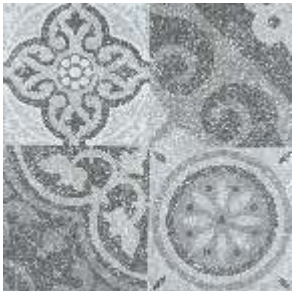
**DURATECH**  
**400x400 mm**

MATT

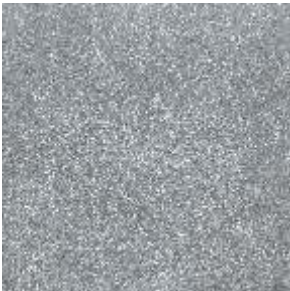
Heavy Duty Outdoor Vitrified Tiles



4024 F



4024 F-HL



4025 F



4030 H ■



4031 H ■



4032 H ■



4036 J



4037 J



4038 J



4040 K



4041 L





4036 J



**DURATECH**

**400x400 mm**

MATT

Heavy Duty Outdoor Vitrified Tiles



4059 T



4043 M



4044 M



4049 P



4050 P



4052 Q ■



4053 R



4054 R



4055 S



4056 S



4059 T ■



4060 U



4061 U



**DURATECH**  
**400x400 mm**

MATT

Heavy Duty Outdoor Vitrified Tiles



K 4066 V ■



K 4067 V ■



K 4072 Z



K 4074 Z



K 4077 AC



K 4078 AC



K 4079 AD



K 4081 AE



K 4082 AE



K 4083 AF



K 4086 AI



K 4087 AJ



K 4088 AK



K 4090 AM



K 4067 V



**DURATECH**

**400x400 mm**

MATT

Heavy Duty Outdoor Vitrified Tiles



K 4091 AN



K 4092 AO



K 4093 AP



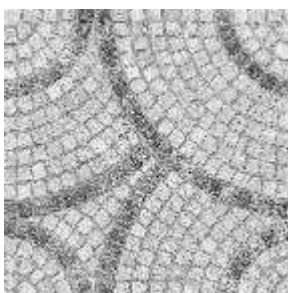
K 4094 AQ



K 4096 AR



K 4098 AS



K 4099 AS



K 4100 AT



K 4101 AT



K 4102 AT



K 4103 AU



K 4105 AW





K 4092 AO



**DURATECH**

**400x400 mm**

MATT

Heavy Duty Outdoor Vitrified Tiles



K 4109 AY





K 4106 AX



K 4107 AX



K 4108 AY



K 4109 AY



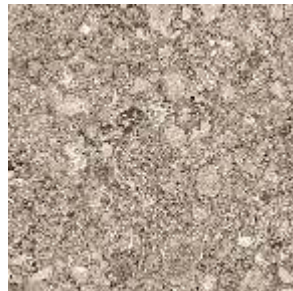
K 4110 AY



K 4111 AZ



K 4112 BA



K 4113 BB



K 4114 BB



K 4115 BC



K 4116 BC



K 4117 BC



K 4118 BC



**DURATECH**

**MOHENJO-DARO | 400x400 mm**

MATT

Heavy Duty Outdoor Vitrified Tiles



K-4151 MJD





K-4151 MJD



RANDOM FACE 8



K-4152 MJD



RANDOM FACE 8



**DURATECH**

**MOHENJO-DARO | 400x400 mm**

MATT

Heavy Duty Outdoor Vitrified Tiles



K-4153 MJD



RANDOM FACE 8



K-4154 MJD



RANDOM FACE 8







K-4153 MJD



**DURATECH**

MATT

**MOHENJO-DARO | 400x400 mm**

---

Heavy Duty Outdoor Vitrified Tiles



K-4155 MJD



RANDOM FACE 8



K-4156 MJD



RANDOM FACE 8





K-4157 MJD



RANDOM FACE 8



K-4157 MJD



**DURATECH**

**MOHENJO-DARO | 400x400 mm**

MATT

Heavy Duty Outdoor Vitrified Tiles







K-4158 MJD



RANDOM FACE 8



K-4159 MJD



RANDOM FACE 8



# DURATECH CLADDING

Size

**300x450** mm



## EXPLORING WORLD'S BEST COLLECTION

The Kajaria's collection carefully addresses the aesthetic and functional requirements of contemporary architecture by creating unique, coherent and personalised settings.

The particular size 300x450mm and the rectified edges create walls characterized by a tuning visual continuity, which makes the vibrant colors and the effect of these brilliant ceramic surfaces even more precious. The typical vibrant veins found in this resistant stone transmit a unique character to the decoration.

High Depth  
Cladding Tiles

**Kajaria**  
**VITRONITE**

SLABS | FULL BODY | OUTDOOR | DOUBLE CHARGE



DEPTH UP TO  
05mm



THICKNESS  
9.3 mm



WATER  
RESISTANCE



## DURATECH CLADDING

300x450 mm

RUSTIC-MATT

High Depth Cladding Tiles





K 34005-B



K 34011-C



K 34015-D



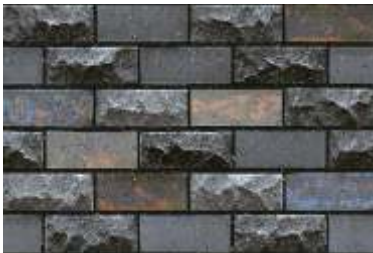
K 34017-E



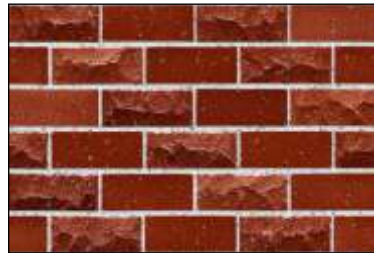
K 34018-F



K 34019-G



K 34020-G



K 34021-G



K 34022-H



K 34026-I



K 34029-J



K 34030-J



K 34035-L



K 34036-L



## DURATECH CLADDING

300x450 mm

RUSTIC-MATT

### High Depth Cladding Tiles



K 34037-M



K 34038-M



K 34039-M



K 34041-N



K 34042-N



K 34043-O



K 34044-O



K 34045-P



K 34045-P HL



K 34046-P



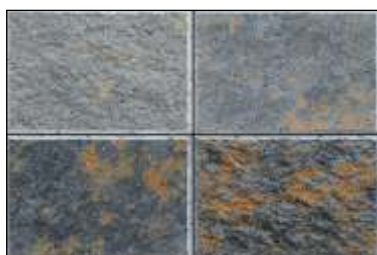
K 34047-P



K 34048-P



K 34050-Q



K 34051-Q



K 34053-R



K 34054-R



K 34055-R



K 34056-S



K 34057-S



K 34057-S





TECHNICAL SPECIFICATION DURATECH 300X450MM | 10MM (HIGH DEPTH CLADDING TILES)

S.No.	CHARACTERISTIC	GROUP BIB : ISO 13006 - 2018	GROUP BIB IS :15622:2017	KAJARIA VITRO VALUE	TEST ACCORDING TO
	Dimensions & surface Quality				
1.	Deviation in length and width	± 0.3%	± 0.1%	± 0.1%	ISO 10545:2/IS13630 (P-1)
2.	Deviation in thickness	± 5%	± 5%	± 4%	ISO 10545:2/IS13630 (P-1)
3.	Deviation in Staightness of sides	± 0.3%	± 0.1%	± 0.1%	ISO 10545:2/IS13630 (P-1)
4.	Deviation in Rectangularity	± 0.3%	± 0.1%	± 0.1%	ISO 10545:2/IS13630 (P-1)
5.	Deviation in Surface Flatness	± 0.4%	± 0.50%	± 0.3%	ISO 10545:2/IS13630 (P-1)
6.	Surface Quality (%)	Minimum 95%	Minimum 95%	No visible defects	ISO 10545:2/IS13630 (P-1)
7.	Glossiness with Nano	Declared by manufacturer		Avg. 5	ISO 2813 (Glossy meter)
	Physical charactersitics				
8.	Scratch Hardness of surface Moh's scale	Required	Min. 5	Min. 6	IS13630 (P-13)
9.	Water absorption	0.5 % < Ev ≤ 3 % Individual maximum 33%	Avg 0.08 % < E ≤ 3 % Individual maximum 33%	Avg 1 %	ISO 10545:3/IS: 13630 (P-2)
10.	Moisture Expansion	Test method available	Max 0.02 mm/m	Max 0.01 mm/m	ISO 10545:10 / IS:13630(P-3)
11.	Surface abrasion	Required	Min Class - 2	PASS : CLASS - 4	ISO 10545:7/IS:13630 (P-11)
	Mechanical charactersitics				
12.	Breaking strength	> 1100 N	Min 1100 N	≥ 1500 N	ISO 10545:4/IS: 13630 (P-6)
13.	Modulus of rupture	>30 N/mm <sup>2</sup>	Average 30,Individual minimum 27N	≥ 38 N/mm <sup>2</sup>	ISO 10545:4/IS: 13630 (P-6)
	Safety charactersitics				
14.	Impact resistance (Coefficient of restitution)	Test method available	Min 0.55	> 0.55	ISO 10545:5/IS: 13630 (P-14)
	Thermo photo charactersitics				
15.	Thermal shock resistance	Test method available	Min 10 cycles	Pass min 10 cycles	ISO 10545:9/IS: 13630 (P-5)
16.	Co efficient of thermal expansion	Test method available	7×10 <sup>-6</sup> Max	<6×10 <sup>-6</sup>	ISO 10545:8/IS:13630 (P-4)
17.	Crazing Resistance	Required	4 Cycle Pass	PASS : 5 cycle	ISO 10545:11/IS:13630 (P-9)
18.	Frost resistance	Required	Required	No Damage	ISO 10545:12/IS: 13630 (P-10)
19.	Small colour differences	Plain coloured tiles only where required ΔE cmc < 0.75	-	No differences	ISO 10545:16
	Chemical characteristics charactersitics				
20.	Stain Resistance	Min Class - 3	Min class - 1	Min conform to class-4'	ISO 10545:14/IS13630 (P-8)
21.	Chemical Resistance HOUSE HOLD CHEMICAL & SWIMMING POOL SALT	Min class-GB	Class - AA	Conform to classes-GA'	ISO 10545:13/IS13630 (P-8)
22.	Chemical Resistance LOW CONCENTRATIONS ACID & ALKALIES	Manufacturer is to state classification	Required	Conform to classes-GLA'	ISO 10545:13/IS13630 (P-8)
23.	Chemical Resistance HIGH CONCENTRATIONS ACID & ALKALIES	Test method available	Required	Conform to classes-GHB'	ISO 10545:13/IS13630 (P-8)

PACKING DETAILS

S. No.	Dimensions ( mm)	No. of tiles / box	Coverage Area
1.	300x450mm   10mm	5 Pcs.	0.675 sqm

\* KAJARIA DURAtch CLADDING TILES have resistance to most of the stains/chemicals but it is recommended to take due care while laying and for day-to-day maintenance.

\* Resistance to acids & alkalies (Exception Hydrofluoric acids & its Compounds)

\* Colours in the catalogue are as accurate as printing process allows. Please check actual sample before making the final selection

\* Sizes mentioned in the catalogue are nominal sizes only.

\* No claim will be entertained once the KAJARIA DURAtch CLADDING TILES are fixed.

\* For better laying. Please follow the instructions on the packaging box.

\* Please make sure to check the shade/finish with the sales agent/ dealer making the final purchase because there might be variation in actual finish that shown in the catalogue. The company will not bear any loss in such case.



→ **12mm**  
ULTRATHICK OUTDOOR VITRIFIED TILES

#### TECHNICAL SPECIFICATION 600x1200MM | 600x600MM | 400x400MM / 12MM DURATECH

S.No.	PROPERTY	GROUP BIA - ISO 13006/EN-176	GROUP BIA IS :15622:2017	OUR VALUE	TEST ACCORDING TO
<b>Dimensions &amp; surface Quality</b>					
1.	Deviation in length and width	± 0.6%	± 0.1%	± 0.1%	ISO 10545:2/IS:13630 (P-1)
2.	Deviation in thickness	± 5%	± 5%	± 4%	ISO 10545:2/IS:13630 (P-1)
3.	Deviation in Staightness of sides	± 0.5%	± 0.1%	± 0.1%	ISO 10545:2/IS:13630 (P-1)
4.	Deviation in Rectangularity	± 0.5%	± 0.1%	± 0.1%	ISO 10545:2/IS:13630 (P-1)
5.	Deviation in Surface Flatness	± 0.5%	± 0.5%	± 0.2%	ISO 10545:2/IS:13630 (P-1)
6.	Surface Quality (%)	Minimum 95%	Minimum 95%	No visible defects	ISO 10545:2/IS:13630 (P-1)
<b>Physical charactersitics</b>					
7.	Scratch Hardness of surface Moh's scale	Required	Min. 5	Min. 6	EN-101/IS:13630 (P-13)
8.	Water absorption	≤0.5%	Averages 0.08, Individual maximum 0.1%	<0.1%	ISO 10545:3/IS: 13630 (P-2)
9.	Moisture Expansion, in mm/m	Nil	0.02, Max	Nil	ISO 10545:10
10.	SurfaceAbrasion Resistance	As per Mfg.	Min Class 2	Min. Class-4	ISO 10545:7
<b>Mechanical charactersitics</b>					
11.	Breaking strength	1300 N	Min 1300 N	>3000N	ISO 10545:4/IS: 13630 (P-6)
12.	Modulus of rupture	>35 N/mm <sup>2</sup>	Average 35, Individual minimum 32	≥40 N/mm <sup>2</sup>	ISO 10545:4/IS: 13630 (P-6)
13.	Impact resistance	Declared by manufacturer	0.55, Min	Min. 0.55	ISO 10545:5/IS:13630 (P-14)
<b>Safety charactersitics</b>					
14.	Density	Required	Min 2.20 gm/cc	2.30 gm/cc	DIN 51082/IS: 13630 (P-2)
15.	Skid resistance (Friction coeeficient )	≥0.4	-	≥0.5	ISO 10545:17
<b>Thermo photo charactersitics</b>					
16.	Thermal shock resistance	Resistant to 10 cycles	Min 10 cycles	Pass min 10 cycles	ISO 10545:9/IS: 13630 (P-5)
17.	Co efficient of thermal expansion	9×10 <sup>-6</sup> K <sup>-1</sup> Max	6×10 <sup>-6</sup> K <sup>-1</sup> Max	<6×10 <sup>-6</sup> K <sup>-1</sup> Max	ISO 10545:8/IS:13630 (P-4)
18.	Frost resistance	Resistant	Required	Resistant	ISO 10545:12/IS: 13630 (P-10)
19.	Crazing Resistance	As per Mfg.	-	Min 10 cycles	ISO 10545:11
<b>Chemical characteristics charactersitics</b>					
20.	Stain Resistance	Min class-3	Required	Min conform to class-4*	ISO 10545:14
21.	Chemical Resistance HOUSE HOLD CHEMICAL & SWIMMING POOL SALT	min class-UB	Required	Conform to classes-UA'	ISO 10545:13/IS:13630 (P-7)
22.	Chemical Resistance LOW CONCENTRATIONS ACID & ALKALIES	min class-ULB	Required	Conform to classes-ULA'	ISO 10545:13/IS:13630 (P-7)
23.	Chemical Resistance HIGH CONCENTRATIONS ACID & ALKALIES	min class-UHB	Required	Conform to classes-UHA'	ISO 10545:13/IS:13630 (P-7)

#### PACKING DETAILS

DIMENSIONS (MM)	NO. OF TILES / BOX	COVERAGE AREA
600x1200	2 Pcs.	1.44 sqm.
600x600	3 Pcs.	1.08 sqm.
400x400	5 Pcs.	0.80 sqm.

\* KAJARIA DURatech CLADDING TILES have resistance to most of the stains/chemicals but it is recommended to take due care while laying and for day-to-day maintenance.

\* Resistance to acids & alkalies (Exception Hydrofluoric acids & its Compounds)

\* Colours in the catalogue are as accurate as printing process allows. Please check actual sample before making the final selection

\* Sizes mentioned in the catalogue are nominal sizes only.

\* No claim will be entertained once the KAJARIA DURatech TILES are fixed.

\* For better laying. Please follow the instructions on the packaging box.

\* Please make sure to check the shade/finish with the sales agent/ dealer making the final purchase because there might be variation in actual finish that shown in the catalogue. The company will not bear any loss in such case.





### TECHNICAL SPECIFICATION POLISHED VITRIFIED TILES

S. No.	PROPERTY	GROUP BIA ISO 13006/EN-176	GROUP BIA IS :15622:2017	KAJARIA VITRO VALUE	TEST ACCORDING TO
<b>Dimensions &amp; surface Quality</b>					
1.	Deviation in length and width	± 0.6%	± 0.1%	± 0.1%	ISO 10545:2/IS:13630 (P-1)
2.	Deviation in thickness	± 5%	± 5%	± 4%	ISO 10545:2/IS:13630 (P-1)
3.	Deviation in Straightness of sides	± 0.5%	± 0.1%	± 0.1%	ISO 10545:2/IS:13630 (P-1)
4.	Deviation in Rectangularity	± 0.5%	± 0.1%	± 0.1%	ISO 10545:2/IS:13630 (P-1)
5.	Deviation in Surface Flatness	± 0.5%	± 0.5%	± 0.2%	ISO 10545:2/IS:13630 (P-1)
6.	Surface Quality (%)	Minimum 95%	Minimum 95%	No visible defects	ISO 10545:2/IS:13630 (P-1)
7.	Glossiness with Nano	Declared by manufacturer	-	Minimum 90	ISO 2813 (Glossy meter)
<b>Physical charactersitics</b>					
8.	Scratch Hardness of surface Moh's scale	Required	Min. 5	Min. 5	EN-101/IS:13630 (P-13)
9.	Water absorption	≤ 0.5%	Averages 0.08, Individual maximum 0.1%	<0.5%	ISO 10545:3/IS: 13630 (P-2)
10.	Moisture Expansion	Nil	0.02, Max	Nil	ISO 10545:10
11.	Deep Abrasion	max 175 mm <sup>3</sup>	Max 140 mm <sup>3</sup>	≤ 140mm <sup>3</sup>	ISO 10545:6/IS:13630 (P-12)
<b>Mechanical charactersitics</b>					
12.	Breaking strength	1300 N	Min 1300 N	≥ 1700 N	ISO 10545:4/IS: 13630 (P-6)
13.	Modulus of rupture	>35 N/mm <sup>2</sup>	Average 35, Individual minimum 32	≥ 40 N/mm <sup>2</sup>	ISO 10545:4/IS: 13630 (P-6)
<b>Safety charactersitics</b>					
14.	Density	Required	Min 2.20 gm/cc	2.34 gm/cc	DIN 51082/IS: 13630 (P-2)
<b>Thermo photo charactersitics</b>					
15.	Thermal shock resistance	Resistant to 10 cycles	Min 10 cycles	Pass min 10 cycles	ISO 10545:9/IS: 13630 (P-5)
16.	Co efficient of thermal expansion	9×10 <sup>-6</sup> /K <sup>°</sup> Max	6×10 <sup>-6</sup> /K <sup>°</sup> Max	<6× <sup>-6</sup> -6K <sup>°</sup> Max	ISO 10545:8/IS:13630 (P-4)
17.	Frost resistance	Resistant	Required	Resistant	ISO 10545:12/IS: 13630 (P-10)
18.	Color Resistance to UV light	Resistant	-	Resistant	DIN 51094
<b>Chemical characteristics charactersitics</b>					
19.	Stain Resistance	Min class-3	Required	Min conform to class-4*	ISO 10545:14
20.	Chemical Resistance HOUSE HOLD CHEMICAL & SWIMMING POOL SALT	Min class-UB	Required	Conform to classes-UA*	ISO 10545:13/IS:13630 (P-7)
21.	Chemical Resistance LOW CONCENTRATIONS ACID & ALKALIES	Min class-ULB	Required	Conform to classes-ULA*	ISO 10545:13/IS:13630 (P-7)
22.	Chemical Resistance HIGH CONCENTRATIONS ACID & ALKALIES	Min class-UHB	Required	Conform to classes-UHA*	ISO 10545:13/IS:13630 (P-7)

### PACKING DETAILS

S. No.	Dimensions ( mm)	No. of tiles / box	Coverage Area
1.	1000x1000	2 Pcs.	2.00 Sq. Mtr.
2.	800x1600	2 Pcs.	2.56 Sq. Mtr.
3.	600x1200	2 Pcs.	1.44 Sq. Mtr.
4.	800x800	3 Pcs.	1.92 Sq. Mtr.

\* Vitrified tiles have resistance to most of the stains/chemicals but,it is recommended to take due care while laying and for day-to-day maintenance.

# Resistance to acids & alkalies (Exception Hydrofluoric Acids & its Compounds)

- Colours in the catalog are as accurate as printing process allows
- Sizes mentioned in the catalog are the nominal sizes only.
- Conforming to ISO requirements, technical specifications for Kajaria tiles are applicable only for 1st quality tiles.
- Please inspect all tiles prior to installation; company will not entertain complaints, once tiles are laid / fixed.
- For better laying, please follow the instructions on the packaging box.



### TECHNICAL SPECIFICATION - POLISHED VITRIFIED TILES ( 60x60 CM)

S. No.	Property	Group B1a - ISO 13006 / EN - 176	Group B1a IS : 15622 : 2017	Our Value	Test According to
<b>Dimensions &amp; surface Quality</b>					
1.	Deviation in length and width	± 0.6%	± 0.1%	± 0.1%	ISO 10545:2/IS:13630 (P-1)
2.	Deviation in thickness	± 5%	± 5%	± 4%	ISO 10545:2/IS:13630 (P-1)
3.	Deviation in Straightness of sides	± 0.5%	± 0.1%	± 0.1%	ISO 10545:2/IS:13630 (P-1)
4.	Deviation in Rectangularity	± 0.5%	± 0.1%	± 0.1%	ISO 10545:2/IS:13630 (P-1)
5.	Deviation in Surface Flatness	± 0.5%	± 0.5%	± 0.2%	ISO 10545:2/IS:13630 (P-1)
6.	Surface Quality (%)	Minimum 95%	Minimum 95%	No visible defects	ISO 10545:2/IS:13630 (P-1)
7.	Glossiness with Nano	Declared by manufacturer	-	Minimum 90%	ISO 2813 (Glossy meter)
<b>Physical characteristics</b>					
8.	Scratch Hardness of surface Moh's scale	Required	Min. 5	Min. 5	EN-101/IS:13630 (P-13)
9.	Water absorption	≤0.5%	Averages 0.08, Individual Maximum, 0.1%	≤0.05%	ISO 10545:3/IS:13630 (P-2)
10.	Moisture Expansion	Nil	0.02, Max	Nil	ISO 10545:10
11.	Deep Abrasion	max 175 mm <sup>3</sup>	max 140 mm <sup>3</sup>	≤ 140mm <sup>3</sup>	ISO 10545:6/IS:13630 (P-12)
<b>Mechanical characteristics</b>					
12.	Breaking strength	1300 N	Min 1300 N	≥ 1300 N	ISO 10545:4/IS:13630 (P-6)
13.	Modulus of rupture	≥35 N/mm <sup>2</sup>	Averages 35 Individual Minimum 32	≥35 N/mm <sup>2</sup>	ISO 10545:4/IS:13630 (P-6)
<b>Safety characteristics</b>					
14.	Density	Required	Min 2.20 gm/cc	2.34 gm/cc	DIN 51082/IS:13630 (P-2)
<b>Thermo photo characteristics</b>					
15.	Thermal shock resistance	Resistant to 10 cycles	Min 10 Cycles	Pass min 10 cycles	ISO 10545:9/IS:13630 (P-5)
16.	Coefficient of thermal expansion	9×10 <sup>-6</sup> °K <sup>-1</sup> Max	6×10 <sup>-6</sup> °K <sup>-1</sup> Max	<6×10 <sup>-6</sup> °K <sup>-1</sup> Max	ISO 10545:8/IS:13630 (P-4)
17.	Frost resistance	Resistant	Required	Need to comply with the standard	ISO 10545:12/IS:13630 (P-10)
18.	Color Resistance to UV light	Resistant	-	Resistant	DIN 51094
<b>Chemical characteristics characteristics</b>					
19.	Stain Resistance	Min class-3	Required	Min conform to class-4	ISO 10545:14
20.	Chemical Resistance HOUSE HOLD CHEMICAL & SWIMMING POOL SALT	min class-UB	Required	Conform to classes-UA	ISO 10545:13/IS:13630 (P-7)
21.	Chemical Resistance LOW CONCENTRATIONS ACID & ALKALIES	min class-ULB	Required	Conform to classes-U LA	ISO 10545:13/IS:13630 (P-7)
22.	Chemical Resistance HIGH CONCENTRATIONS ACID & ALKALIES	min class-ULB	Required	Conform to classes-UHA	ISO 10545:13/IS:13630 (P-7)

### PACKING DETAILS

S. No.	Dimensions ( mm)	No. of tiles / box	Coverage Area
1.	600x600	4 Pcs.	1.44 Sq. Mtr.

- vitrified tiles have resistance to most of the stains/chemicals but, it is recommended to take due care while laying and for day-to-day maintenance.

# Resistance to acids & alkalies (Exception Hydrofluoric Acids & its Compounds)

- Colours in the catalog are as accurate as printing process allows
- Sizes mentioned in the catalog are the nominal sizes only.
- Conforming to ISO requirements, technical specifications for Kajaria tiles are applicable only for 1st quality tiles.
- Please inspect all tiles prior to installation; company will not entertain complaints, once tiles are laid / fixed.
- For better laying, please follow the instructions on the packaging box.





## TECHNICAL SPECIFICATION - FULL BODY VITRIFIED TILES

S. No.	Property	Group Bla - ISO 13006/EN-176	Group Bla IS : 15622:2017	Our Value	Test According to
Dimensions & surface Quality					
1.	Deviation in length and width	± 0.6%	± 0.1%	± 0.1%	ISO 10545:2/IS:13630 (P-1)
2.	Deviation in thickness	± 5%	± 5%	± 4%	ISO 10545:2/IS:13630 (P-1)
3.	Deviation in Straightness of sides	± 0.5%	± 0.1%	± 0.1%	ISO 10545:2/IS:13630 (P-1)
4.	Deviation in Rectangularity	± 0.5%	± 0.1%	± 0.1%	ISO 10545:2/IS:13630 (P-1)
5.	Deviation in Surface Flatness	± 0.5%	± 0.5%	± 0.2%	ISO 10545:2/IS:13630 (P-1)
6.	Surface Quality (%)	Minimum 95%	Minimum 95%	No visible defects	ISO 10545:2/IS:13630 (P-1)
Physical charactersitics					
7.	Scratch Hardness of surface Moh's scale	Required	Min. 5	Min. 5	EN-101/IS:13630 (P-13)
8.	Water absorption	≤0.5%	Averages 0.08, Individual maximum, 0.1%	≤0.05%	ISO 10545:3/IS: 13630 (P-2)
9.	Moisture Expansion	Nil	0.02 Max	Nil	ISO 10545:10
10.	Deep Abrasion	max 175 mm <sup>3</sup>	max 140 mm <sup>3</sup>	≤140 mm <sup>3</sup>	ISO 10545:6/IS:13630 (P-12)
Mechanical charactersitics					
11.	Breaking strength	1300 N	Min 1300	≥ 2000N	ISO 10545:4/IS: 13630 (P-6)
12.	Modulus of rupture	≥ 35 N/mm <sup>2</sup>	Average 35, Individual minimum 32	≥ 35 N/mm <sup>2</sup>	ISO 10545:4/IS: 13630 (P-6)
Safety charactersiticsDensity					
13.	Density	Required	Min 2.20 gm/cc	2.34 gm/cc	DIN 51082/IS: 13630 (P-2)
14.	Skid resistance (Friction coeeficient)	≥ 0.4	-	≥ 0.4	ISO 10545:17
Thermo photo charactersitics					
15.	Thermal shock resistance	Resistant to 10 cycles	Min 10 cycles	Pass min 10 cycles	ISO 10545:9/IS: 13630 (P-5)
16.	Co efficient of thermal expansion	9×10 <sup>-6</sup> K <sup>-1</sup> Max	6×10 <sup>-6</sup> K <sup>-1</sup> Max	<6×10 <sup>-6</sup> K <sup>-1</sup> Max	ISO 10545:8/IS:13630 (P-4)
17.	Frost resistance	Resistant	Required	Resistant	ISO 10545:12/IS: 13630 (P-10)
18.	Color Resistance to UV light	Resistant	-	Resistant	DIN 51094
Chemical characteristics charactersitics					
19.	Stain Resistance	Min Class 3	Required	Min conform to class 4	ISO 10545:14
20.	Chemical Resistance HOUSE HOLD CHEMICAL & SWIMMING POOL SALT	min class-UB	Required	Conform to classes-UA	ISO 10545:13/IS:13630 (P-7)
21.	Chemical Resistance LOW CONCENTRATIONS ACID & ALKALIES	min class-ULB	Required	Conform to classes-ULA	ISO 10545:13/IS:13630 (P-7)
22.	Chemical Resistance HIGH CONCENTRATIONS ACID & ALKALIES	min class-UHB	Required	Conform to classes-UHA	ISO 10545:13/IS:13630 (P-7)

## PACKING DETAILS

S. No.	Dimensions ( mm)	No. of tiles / box	Coverage Area
1.	800x1600	2 Pcs.	2.56 Sq. Mtr.
2.	600x1200	2 Pcs.	1.44 Sq. Mtr.
3.	600x600	4 Pcs.	1.44 Sq. Mtr.

\* Vitrified tiles have resistance to most of the stains/chemicals but, it is recommended to take due care while laying and for day-to-day maintenance.

# Resistance to acids & alkalies (Exception Hydrofluoric Acids & its Compounds)

1. Colours in the catalog are as accurate as printing process allows

2. Sizes mentioned in the catalog are the nominal sizes only.

3. Conforming to ISO requirements, technical specifications for Kajaria tiles are applicable only for 1st quality tiles.

4. Please inspect all tiles prior to installation; company will not entertain complaints, once tiles are laid / fixed.

5. For better laying, please follow the instructions on the packaging box.

NORTH

CHANDIGARH

SCO- 45-46-47, first floor, sector-17A,  
opp. Taj Hotel, Chandigarh-160017  
Phone : 0172- 4631419 / 16  
Mobile : 9501001163

DEHRADUN

International Trade Tower, 1 Old Survey Road,  
Adjoining Rajpur Road,, Near Cross Road Mall  
Dehradun - 248001, Uttarakhand  
Mobile : 97600 40499

JAIPUR

First Floor, Nidhi Kamal Tower, Plot No 37-38 B,  
Barwara House, Ajmer Road,Jaipur - 302006, Rajasthan  
Phone : 0141-3568640  
Mobile : 99290 22124

LUDHIANA

Upper Ground Floor, Sandhu Tower-2,  
Gurdev Nagar, Ferozpur Road, Ludhiana - 141001, Punjab  
Phone : +91-161-4062909  
Mobile : 9779021257

LUCKNOW

529 GHA/06, Kanchana Bihari Marg,  
Near Jagrani Hospital, Ring Road  
Lucknow - 226016 (U.P)  
Mobile : 9793299660, 8128243886

JAMMU

1st Floor, Bachithar Complex Sector-7,  
Channi Himmat, Jammu,  
Jammu And Kashmir 180015  
Mobile : 9906909300

EAST

KOLKATA (Regional office)

Tirupati Plaza, 2nd Floor, 74/2, A.J.C.Bose Road,  
Opp to Jora Girja,  
Kolkata - 700 016 (West Bengal)  
Mobile: 9007011023

PATNA (Regional office)

'ANCHAL', House No - 15, Ground Floor  
Justice Narayan Path, Nageswar Colony,  
Patna - 800001, Bihar  
Mobile: 7781005449

WEST

MUMBAI

B1-307, BOOMERANG, Chandivali Farm Road,  
Near Chandivali Studio, Off Saki-Vihar Road,  
Andheri (E) Mumbai - 400072, (Maharashtra)  
Mobile : 9987753947,9987753948

PUNE

601-A, D.S.K. Gandharv Heights,  
Ganesh Khind Road, Shivaji Nagar,  
Pune - 411005, (Maharashtra)  
Mobile : 9730081546

AHMEDABAD (Regional office)

Office No. 504, City Centre-2, 5th Floor,  
Nr. Sukan Mall Cross Road,  
Science City Road, Sola, Ahmedabad -380060  
Mobile :9724340890

CENTRAL

RAIPUR

1st Floor, Maharaja Plaza, Near Wholesale  
Fruit Market, Dhamtari Road, Laalpur  
Raipur-492001, Chhattisgarh  
Mobile : 9752598469

INDORE (Regional office)

S.A. Tower, 1st Floor, 13/3 New Palasia,  
Opp. Arya Samaj Building, Indore, 452001  
Mobile: 9752593468

SOUTH

BANGALORE

Farah Icon, 119 First Floor  
Opp. New Pass Port Kendra, Lalbagh Road,  
Bangalore – 560 027, (Karnataka)  
Mobile : 900840 2940, 900840 2922  
9008957861

CHENNAI

No.162, Metro Plazo, Anna Salai,  
Opp. Spencer Plaza Mall, Chennai - 600 002  
Ph: 044-4858 4990 / 4858 4991  
Mobile. : 9003077099, 9599194842,  
9003075275

COCHIN

MN Square, 1st Floor  
549/2, Near Gold Souk Grande  
NH Bypass, Vyttila, Cochín- 19, (Kerala)  
Mobile : 9746474732, 9746474733

COIMBATORE

First Floor , No.57, Cowley Brown Road,  
R.S Puram, Coimbatore - 641002, (Tamil Nadu)  
Mobile : 9003325075, 9003842142

HYDERABAD

Keerthi & Pride Towers, House No. 8-2-120/86/1&2,  
3rd Floor, plot No.11 & 12, Road No.2, Banjara Hills  
Hyderabad-500034, (Telangana)  
Mobile : 9000005385

COMPANY REPRESENTATIVE

NORTH

AGRA :

Mobile : 9760045574

ALLAHABAD :

Mobile : 9773983600

BHATINDA :

Mobile : 9501001162

DELHI / FARIDABAD / GURGAON :

Mobile : 9717795123

GHAZIABAD/ NOIDA :

Mobile : 9810010240

GORAKHPUR :

Mobile : 8009407878

HALDWANI :

Mobile : 9760098112

JALANDHAR :

Mobile : 9779021261

JODHPUR :

Mobile : 9001094759

KANPUR :

Mobile : 9773983602

KOTA :

Mobile : 9929112223

MANDI :

Mobile : 9870105948

ROHTAK / HISSAR / REWARI :

Mobile : 9717795118

SHIMLA

Mobile : 9501001163

UDAIPUR :

Mobile : 9001092597

VARANASI :

Mobile : 9794865554

EAST

BIHAR :

Mobile : 7781005449

JHARKHAND :

Mobile : 9938234060

NORTH EAST

Mobile : 9007372220

WEST BENGAL

Mobile : 9007011023

ODISHA

Mobile : 9937571222

SOUTH

CALICUT:

Mobile : 9746117422

KANNUR :

Mobile : 9746474736

HUBLI :

Mobile : 9008022099

MADURAI :

Mobile : 9003071609

MANGALORE :

Mobile : 9008402944

SALEM :

Mobile : 9003842142

TRIVANDURM :

Mobile : 9746474735

TRICHY :

Mobile : 9003075175

THRISSUR :

Mobile : 9746474734

VIJAYAWADA :

Mobile : 9000302776

VISAKHAPATNAM :

Mobile : 9000005387

TIRUPATI :

Mobile : 9701451286

TIRUNELVELI :

Mobile : 9840681888

WEST

AURANGABAD :

Mobile : 8600992618

KOLHAPUR :

Mobile : 8600992617

NASIK :

Mobile : 9730081553

NAGPUR :

Mobile : 7755904583

GOA :

Mobile : 7757032203

SURAT :

Mobile : 9724340890

BARODA :

Mobile : 9205897978

CENTRAL

BILASPUR :

Mobile : 9752598469

JABALPUR :

Mobile : 9752593831

GWALIOR :

Mobile : 9752593834

BHOPAL :

Mobile : 9826812147



# ***Kajaria***




INDIA'S NO. 1 TILE COMPANY

## **Kajaria Ceramics Limited**

Corporate Office: J1/B1 (Extn.), Mohan Co - op Industrial Estate, Mathura Road, New Delhi - 110044, Ph.: 011-26946409

Regd Office: SF-11, Second Floor, JMD Regent Plaza, Mehrauli Gurgaon Road, Village Sikanderpur Ghosi, Gurgaon-122001, Haryana, Ph.:0124-4081281

CIN No. : L26924HR1985PLC056150, E-mail: [info@kajariaceramics.com](mailto:info@kajariaceramics.com), Web.: [www.kajariaceramics.com](http://www.kajariaceramics.com)

 [facebook.com/KajariaCeramicsLimited](https://facebook.com/KajariaCeramicsLimited)  [twitter.com/KajariaCeramic](https://twitter.com/KajariaCeramic)  [instagram.com/kajaria.ceramics](https://instagram.com/kajaria.ceramics), Tollfree : 1800-309-309

Download Kajaria App

